



The Propeller Club
OF NORTHERN CALIFORNIA

Sea Level Rise Adaptation Strategies

Adrienne Fedrick Newbold, PE, PMP

Senior Civil Engineer

December 3, 2019



THE PORT OF LOS ANGELES



7,500 acres

- 4,300 land and 3,200 water

43 miles of Waterfront

Water depth of -53 ft

Market Share

- 43% West Coast, 18% Nationally

Jobs

- 1.6 Million jobs Nationwide,
- 500,000 regionally
- 150,000 locally

270 berths

- Includes 30 berths with Alternative Maritime Power™ (AMP™)

9.5 Million TEUs in 2018

27 Terminals

- Auto (1)
- Breakbulk (4)
- Container (8)
- Dry Bulk (3)
- Liquid Bulk (7)
- Multi-Use (2)
- Passenger (2)

Public Amenities And Attractions

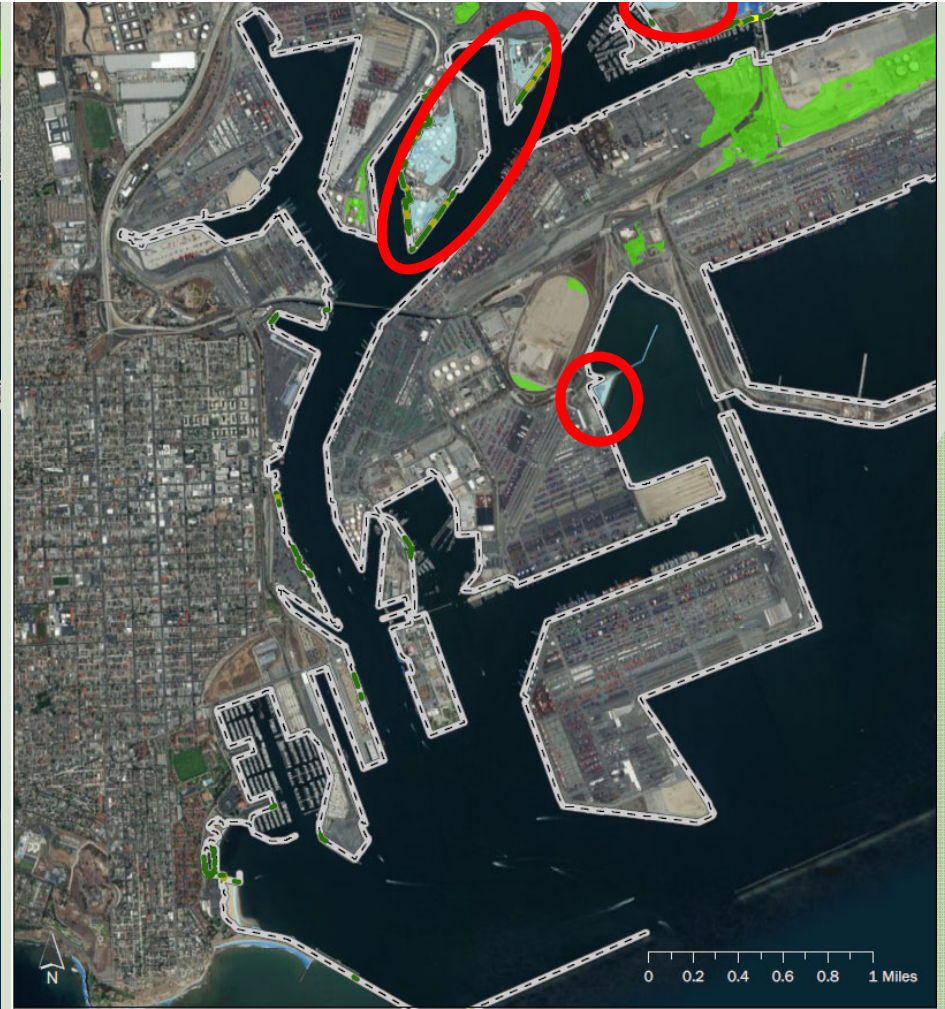
SEA LEVEL RISE STUDY OVERVIEW



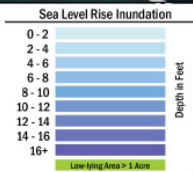
- Task 1 • Asset Inventory
- Task 2 • Sea Level Rise Inundation Maps
- Task 3 • Vulnerability Assessment
- Task 4 • Development of SLR Adaptation Strategies
- Task 5 • Prioritized Strategies
- Task 6 • Sea Level Rise Adaptation Study

*One year ahead of schedule!

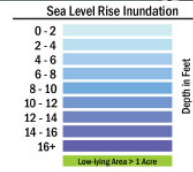
12" SLR (2030)



THE PORT OF LOS ANGELES
Inundation Mapping
MHHW + 12" SLR



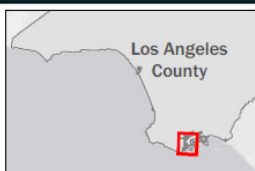
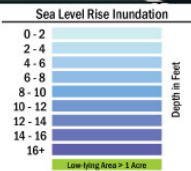
THE PORT OF LOS ANGELES
Inundation Mapping
100-yr Tide + 12" SLR



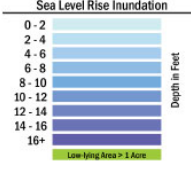
24" SLR (2050)



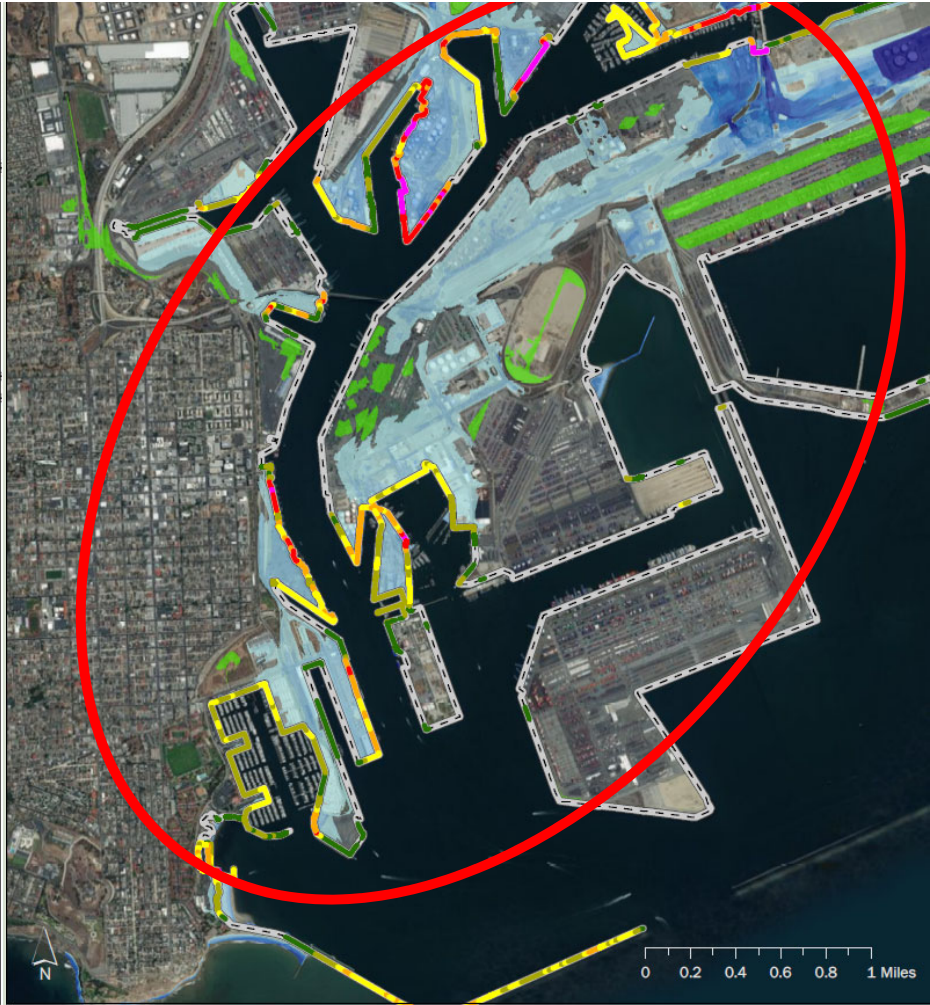
THE PORT OF LOS ANGELES
Inundation Mapping
MHHW + 24" SLR



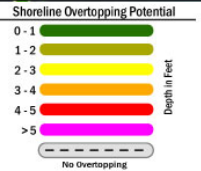
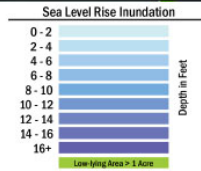
THE PORT OF LOS ANGELES
Inundation Mapping
100-yr Tide + 24" SLR



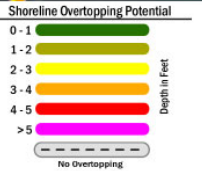
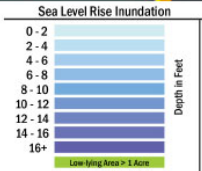
66" SLR
(2100)



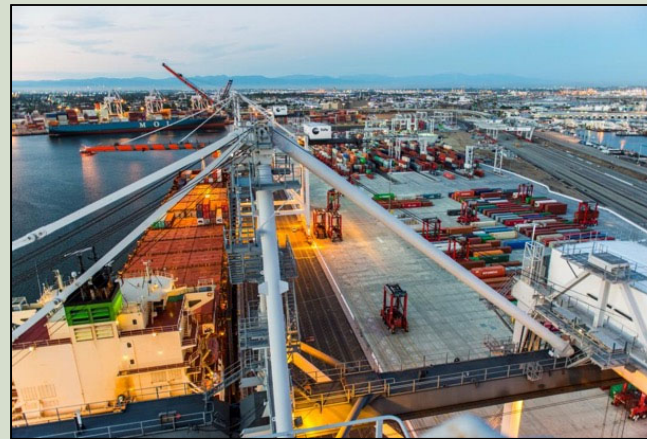
THE PORT OF LOS ANGELES
Inundation Mapping
MHHW + 66" SLR



THE PORT OF LOS ANGELES
Inundation Mapping
100-yr Tide + 66" SLR



DEVELOPMENT OF STRATEGIES



Governance:

Include Sea Level Rise considerations in policy planning

Initiatives:

Feasibility Studies and Collaboration

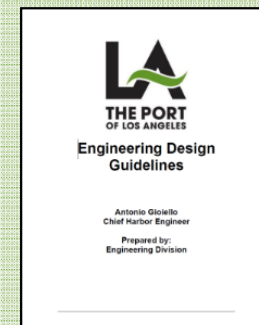
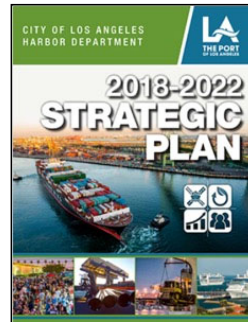
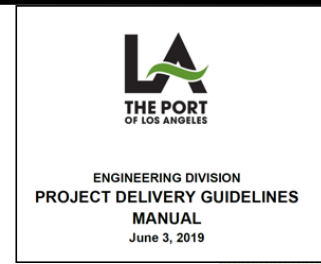
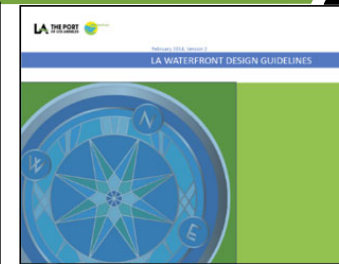
Physical Infrastructure:

Temporary/Permanent Protection around impacted areas

GOVERNANCE



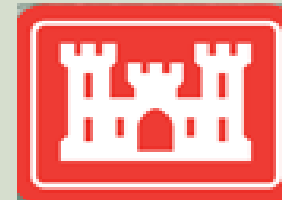
1. Add language regarding SLR to the following guiding policy, planning, and design guidelines:
 1. Port Master Plan
 2. Strategic Plan (2018-2022)
 3. Engineering Design Guidelines
 4. LA Waterfront Design Guidelines
 5. Risk Management Considerations
2. Develop a one page vulnerability zone map
3. Add standard language regarding SLR to future RFPs/RFQs
4. Update Lease Requirements to reference the SLR Plan
5. Consider SLR in Capital funded projects
6. Monitor SLR science and continually update the plan



INITIATIVE




1. Develop a management system to track extreme weather events and associated damage and disruption to justify funding for future related projects
2. Feasibility study to determine most appropriate temporary flood protection based on storage, cost, erection, and maintenance
3. Regional Collaboration (POLB, City of LA)
4. Participate in CAPA Sea Level Rise Committee
5. Discuss breakwater vulnerabilities with ACOE
6. Funding opportunities
7. Tenant Collaboration
8. POLA Working group (All Divisions)
9. Evaluate all pump stations



KEY TAKAWAYS



- POLA is committed to staying resilient to climate change
- Sea Level Rise  is a component of our general plan
- Continue to Monitor Sea Level Rise

