

NOVEMBER 9, 2022

Louisiana's Coastal Master Plan

STORMS, FLOODING, AND SEA LEVEL DEFENSE
CONFERENCE

PROPELLER CLUB OF NORTHERN CALIFORNIA

RUDY SIMONEAUX, CPRA CHIEF OF ENGINEERING



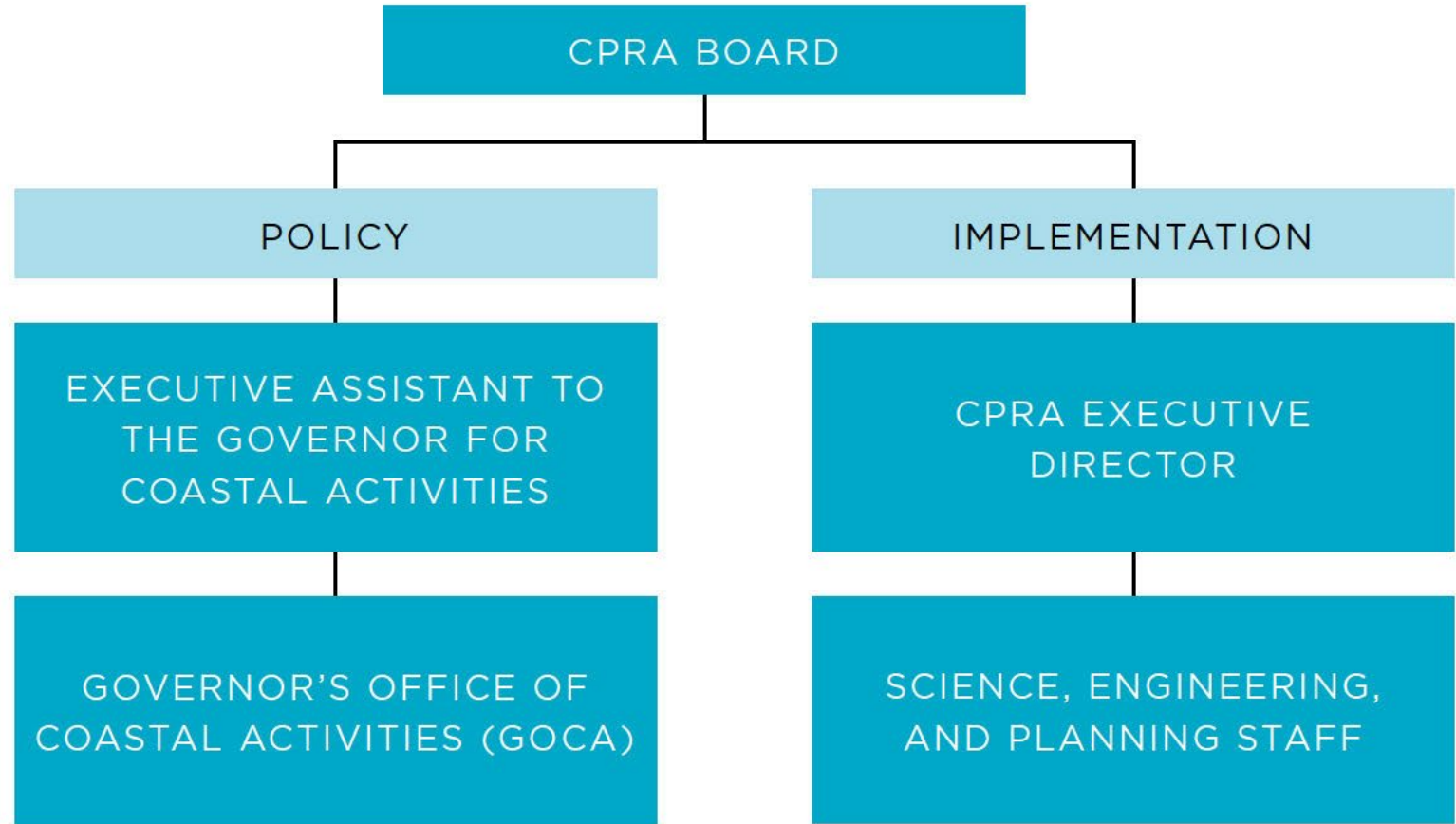
COASTAL PROTECTION AND RESTORATION AUTHORITY

Single state entity with authority to articulate a clear statement of priorities to achieve comprehensive coastal protection for Louisiana.

Mandate is to develop, implement, and enforce a comprehensive coastal protection and restoration master plan.

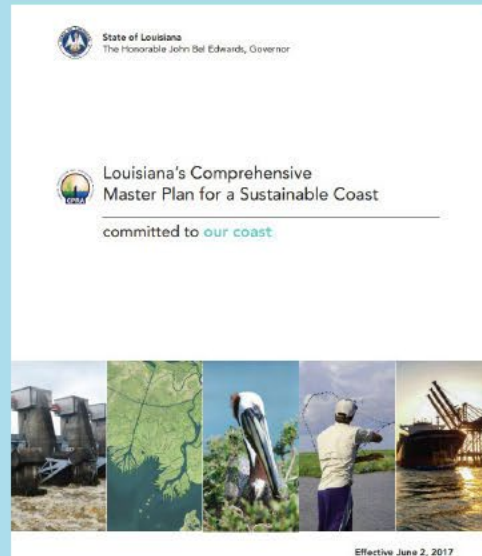
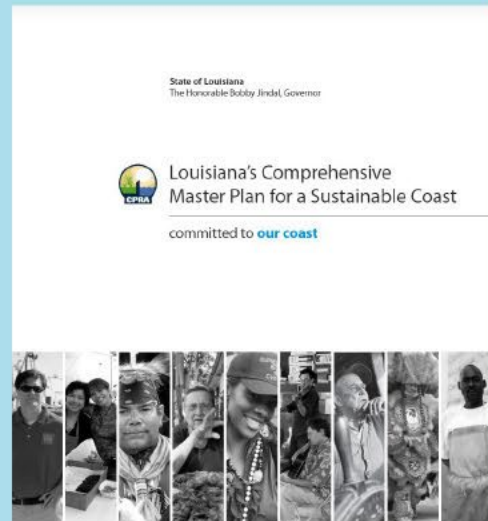
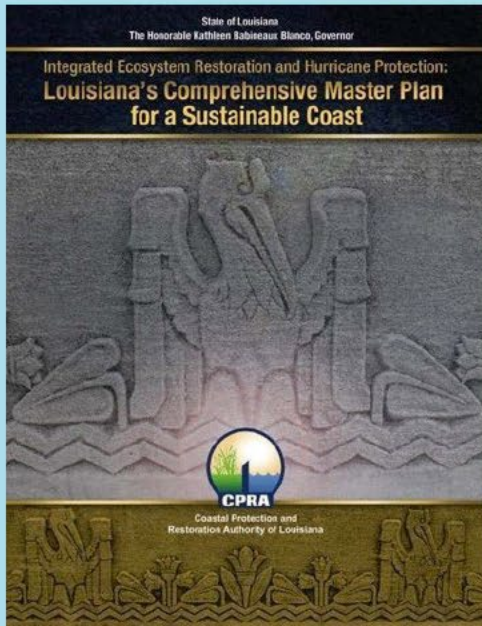


LOUISIANA'S COASTAL PROGRAM



LOUISIANA'S COMPREHENSIVE MASTER PLAN FOR A SUSTAINABLE COAST

ARTICULATES AN INTEGRATED AND COMPREHENSIVE VISION FOR RESTORATION AND PROTECTION IN COASTAL LOUISIANA



DEFINES A LIST OF PROJECTS

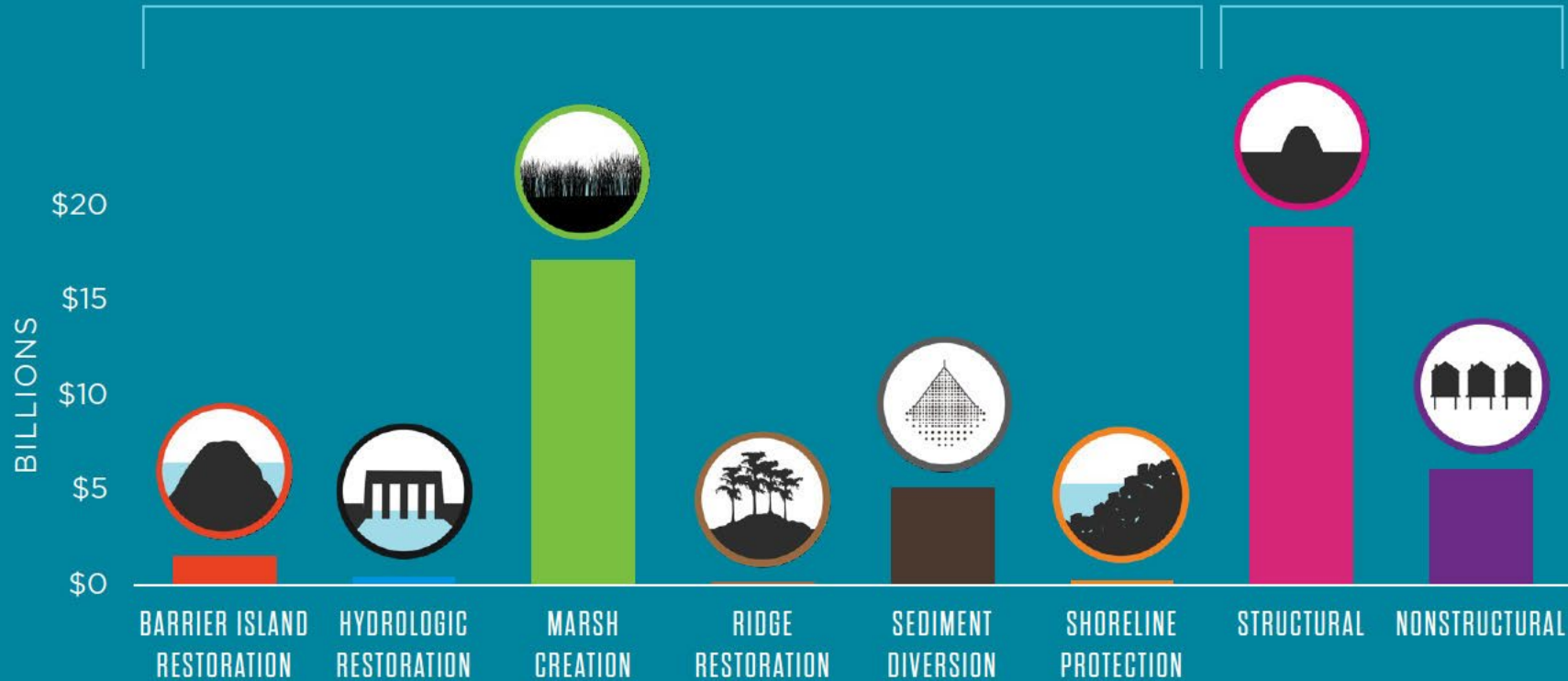
50-YEAR, \$50 BILLION BUDGET

UPDATED EVERY 6 YEARS

COASTAL MASTER PLAN

\$25B RESTORATION

\$25B RISK REDUCTION

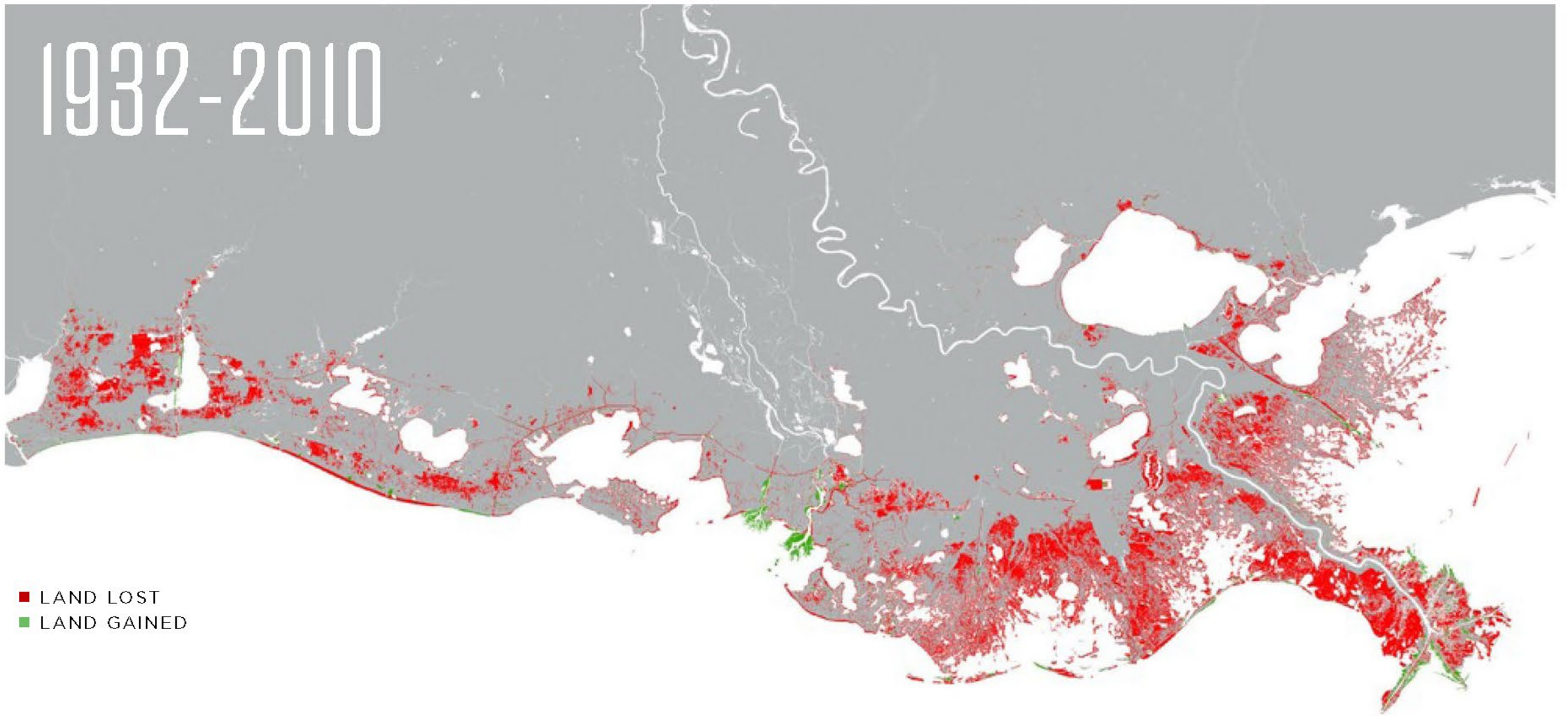


\$50B

TOTAL FUNDING

OUR LAND LOSS CRISIS

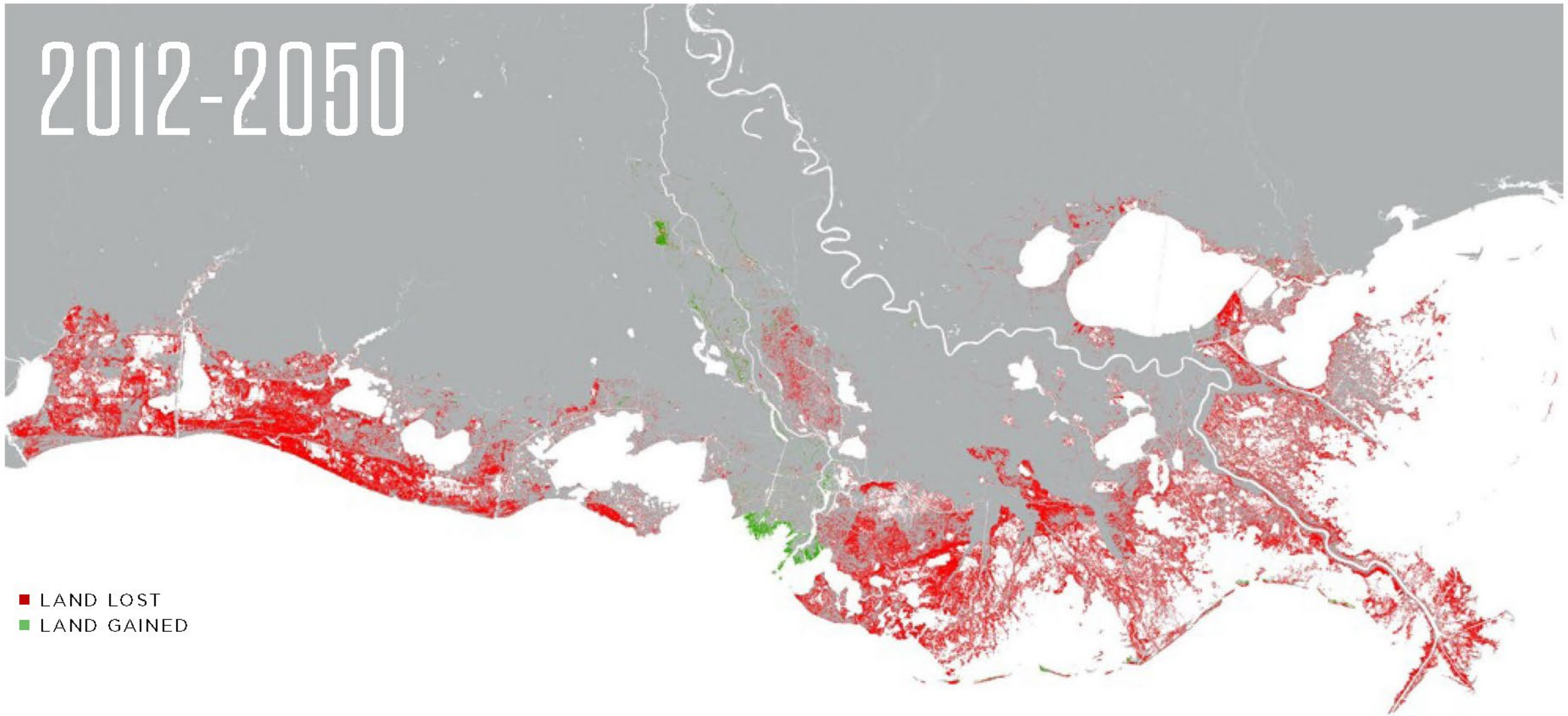
1932-2010



■ LAND LOST
■ LAND GAINED

LOUISIANA LAND LOSS: 2,006 SQUARE MILES

2012-2050



■ LAND LOST
■ LAND GAINED

LOUISIANA LAND LOSS: 4,200 SQUARE MILES

Causes of Land Loss

SEA LEVEL RISE, SUBSIDENCE, & CLIMATE CHANGE

DEEPWATER HORIZON OIL SPILL & RESPONSE ACTIVITIES

OTHER MANMADE CONTRIBUTIONS

LEVEEING THE MISSISSIPPI RIVER/LACK OF NEW SEDIMENT



SINCE 1855

130

TROPICAL STORMS
AND DEPRESSIONS

60

HURRICANES

23

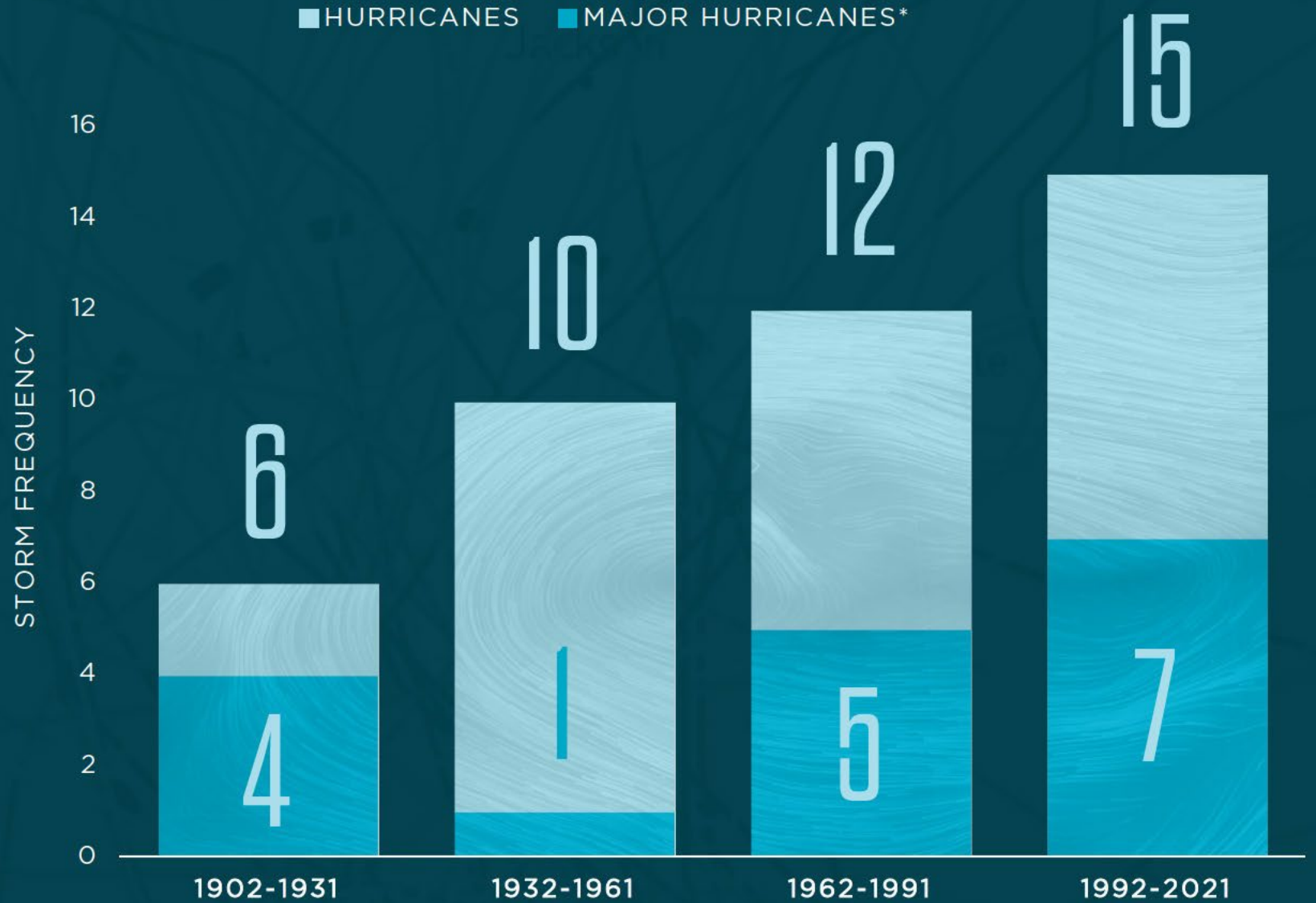
MAJOR HURRICANES

3 MAJOR HURRICANES SINCE 2020

2 OF THE 3 STRONGEST HURRICANES IN LOUISIANA'S
HISTORY HAVE HAPPENED SINCE 2020 (LAURA, IDA)

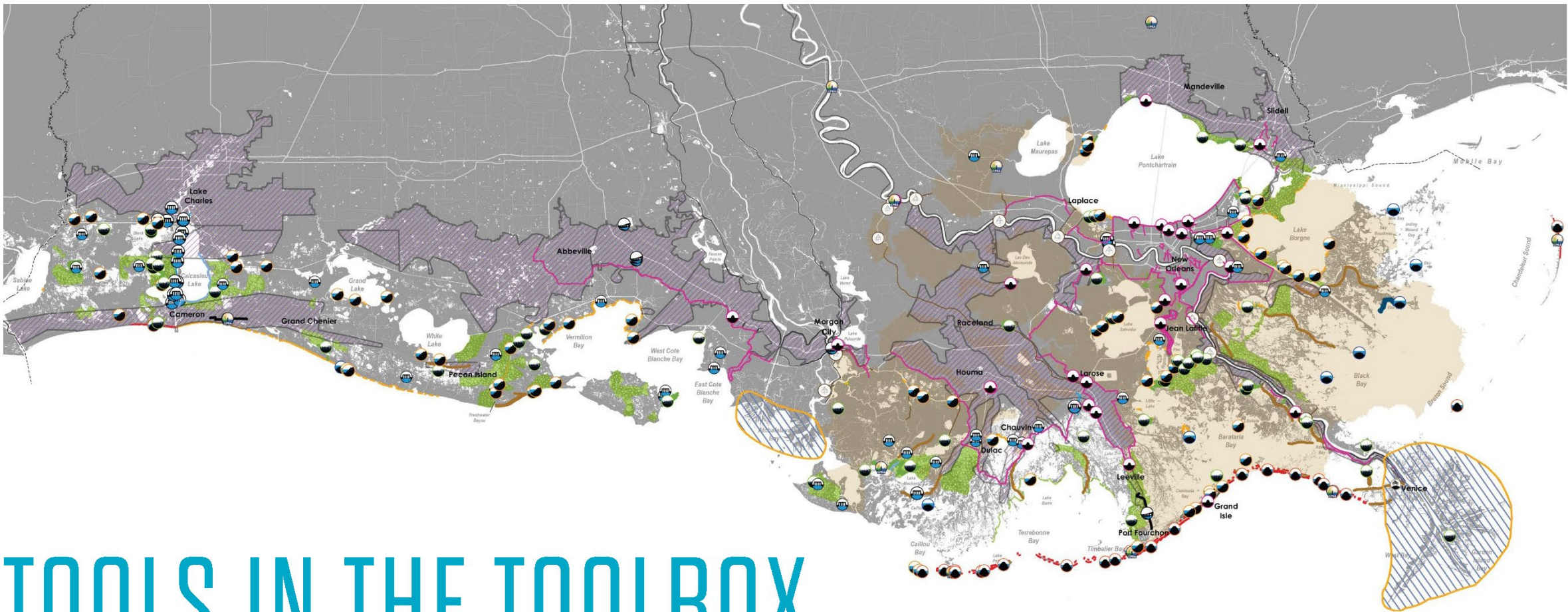
LOUISIANA HURRICANES

(1902-2021)



**DEFINED AS A CATEGORY 3, 4, OR 5 AT LANDFALL

WHAT WE'RE DOING ABOUT IT



TOOLS IN THE TOOLBOX



BARRIER ISLAND RESTORATION



HYDROLOGIC RESTORATION



STRUCTURAL PROTECTION



SHORELINE PROTECTION



LIVING SHORELINE



RIDGE RESTORATION



MARSH CREATION



INFRASTRUCTURE



DIVERSION



MISC.

CPRA SINCE 2007

52,585
ACRES
BENEFITED
(82.2 SQUARE MILES)

165 M yd³ OF FILL

60 MILES
OF BARRIER ISLAND RESTORATION

358 MILES
OF IMPROVED
LEVEE

\$23 B
SECURED

95 ACTIVE PROJECTS

PROJECT TYPE	36 CONSTRUCTION	56 E & D	3 PLANNING
Hurricane Protection (20)	13	5	2
Marsh Creation (42)	11	31	
Ridge Restoration (2)		2	
Shoreline Protection (9)	2	7	
Barrier Island/Headlands (2)		2	
Diversions (4)	1	3	
Hydrologic Restoration (4)	2	2	
Oyster Barrier Reef (1)	1		
Recreational Use (6)	5	1	
Other (5)	1	3	1

MARSH CREATION



MARSH CREATION



DREDGE PIPES CARRY SEDIMENT

MARSH CREATION



DREDGE PIPES CARRY SEDIMENT

SEDIMENT IS DEPOSITED INTO BASINS TO CREATE MARSH

MARSH CREATION



SPANISH PASS

Barataria
Basin Ridge
and Marsh
Creation

Status:
Construction



USING SEDIMENT DREDGED FROM THE MISSISSIPPI RIVER, THE PROJECT WILL BE THE LARGEST MARSH CREATION EFFORT BY VOLUME EVER CONSTRUCTED BY CPRA.



SPANISH PASS

Barataria Basin Ridge and Marsh Creation

Status:
Construction



SPANISH PASS

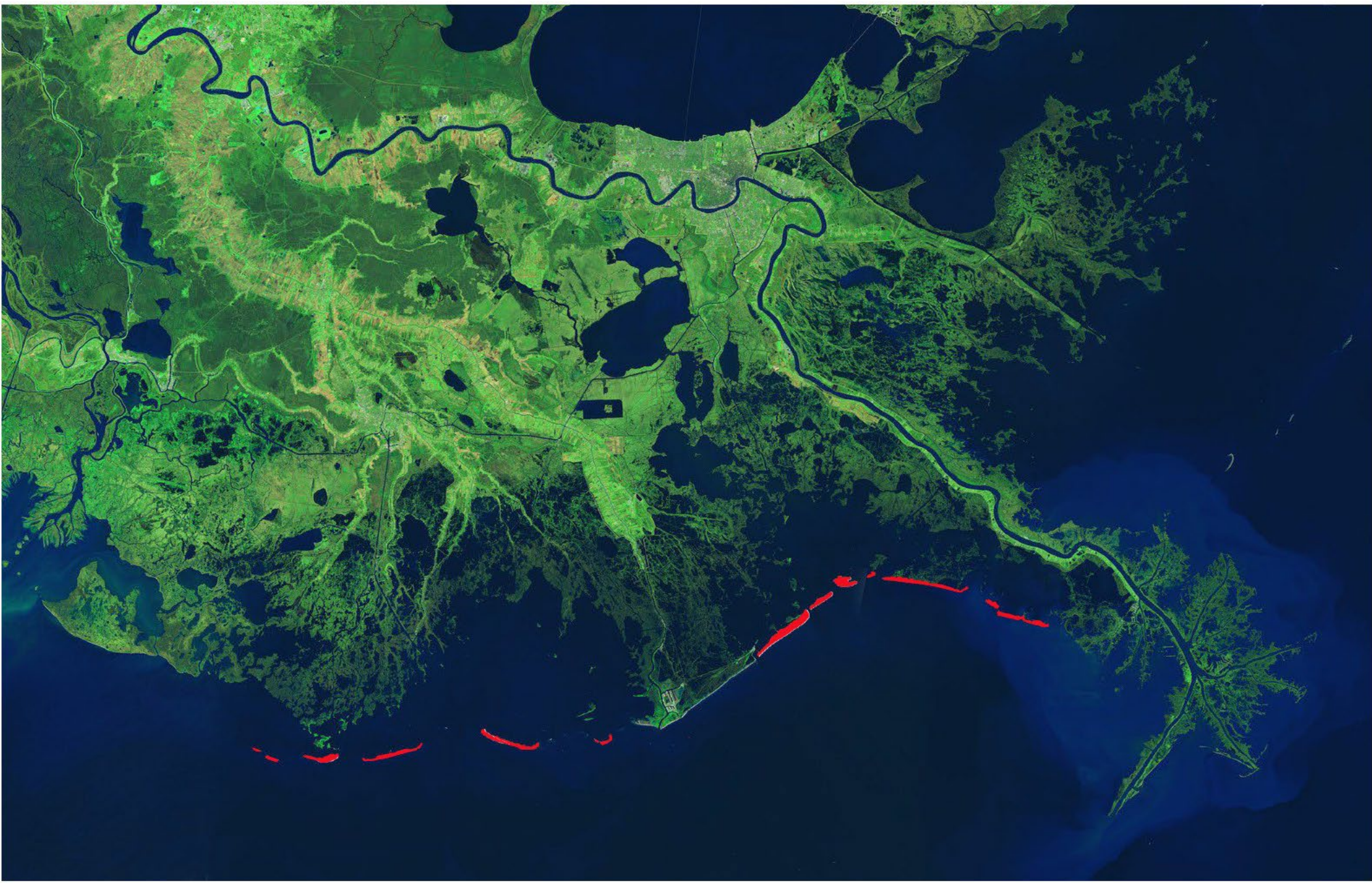
Barataria
Basin Ridge
and Marsh
Creation

Status:
Construction





BARRIER ISLANDS



TRINITY-EAST ISLAND

Terrebonne Basin
Barrier Island and
Beach Nourishment

Status:
Completed 2022



2.5 MILES OF
SHORELINE

253 ACRES OF
BEACH HABITAT
RESTORED

TRINITY-EAST ISLAND

Terrebonne Basin
Barrier Island and
Beach Nourishment

Status:
Completed 2022



Challenges and Opportunities

COST ESCALATION

DREDGE AVAILABILITY

EXISTING INFRASTRUCTURE

INDUSTRY OUTREACH

SMALL/MEDIUM DREDGE POOL

SYNERGIES WITH NAVIGATION DREDGING PROJECTS



Synergies with Navigation Dredging Projects



Sediment Diversion Projects



Why Sediment Diversions?

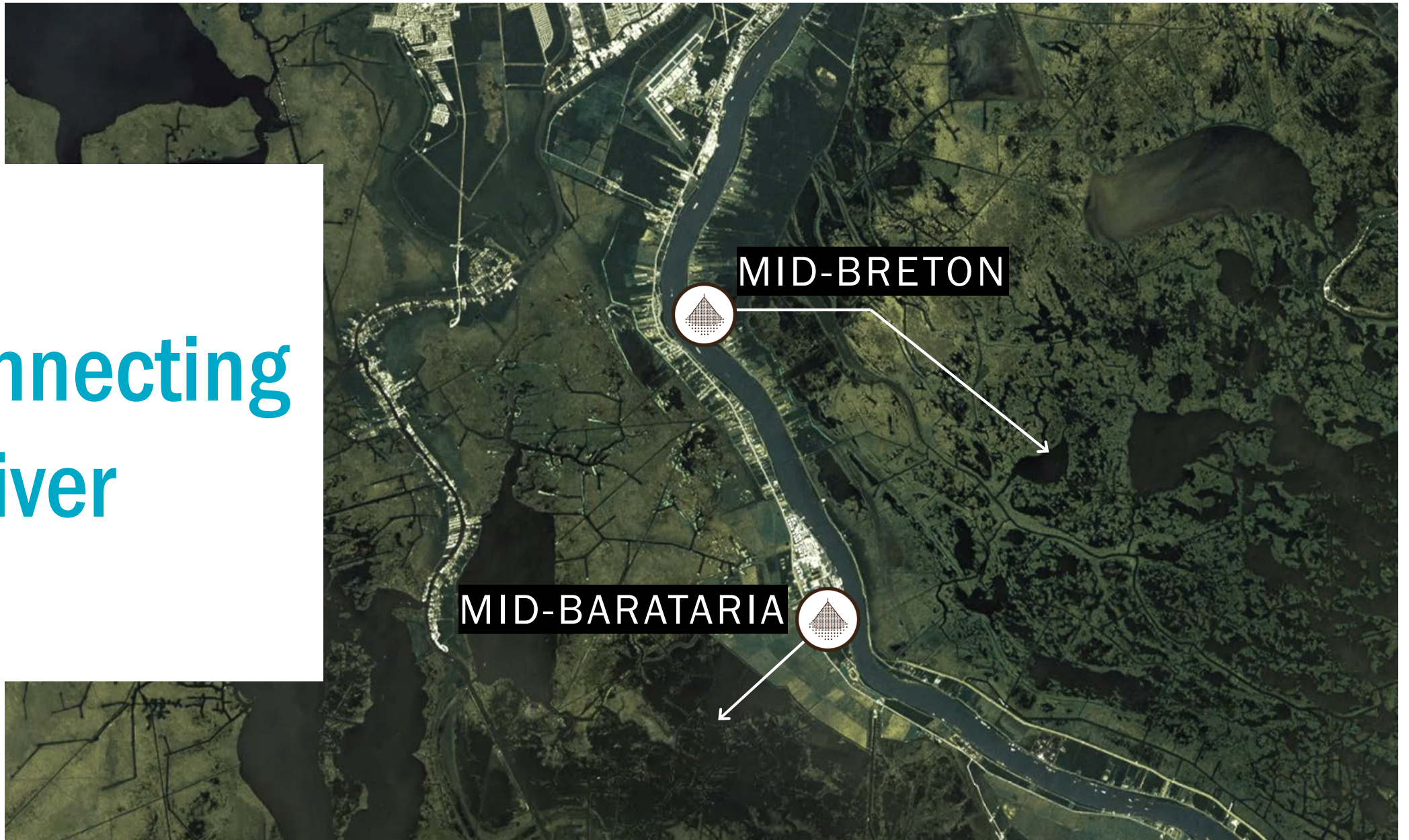
RECONNECTING THE RIVER AND
REESTABLISHING THE NATURAL LAND
BUILDING PROCESSES

OUR ONLY SUSTAINABLE WAY TO BUILD
NEW LAND

RETURNING THE ESTUARY AND
ECOSYSTEM'S PRODUCTIVITY

RESTORING HISTORICAL SALINITY
PATTERNS

Reconnecting the River





ACCESS TO
SEDIMENT, NUTRIENTS,
AND FRESHWATER

NO ACCESS TO
SEDIMENT,
NUTRIENTS,
AND FRESHWATER

RIVER MILE 61
NEAR IRONTON, LA

MID-BARATARIA



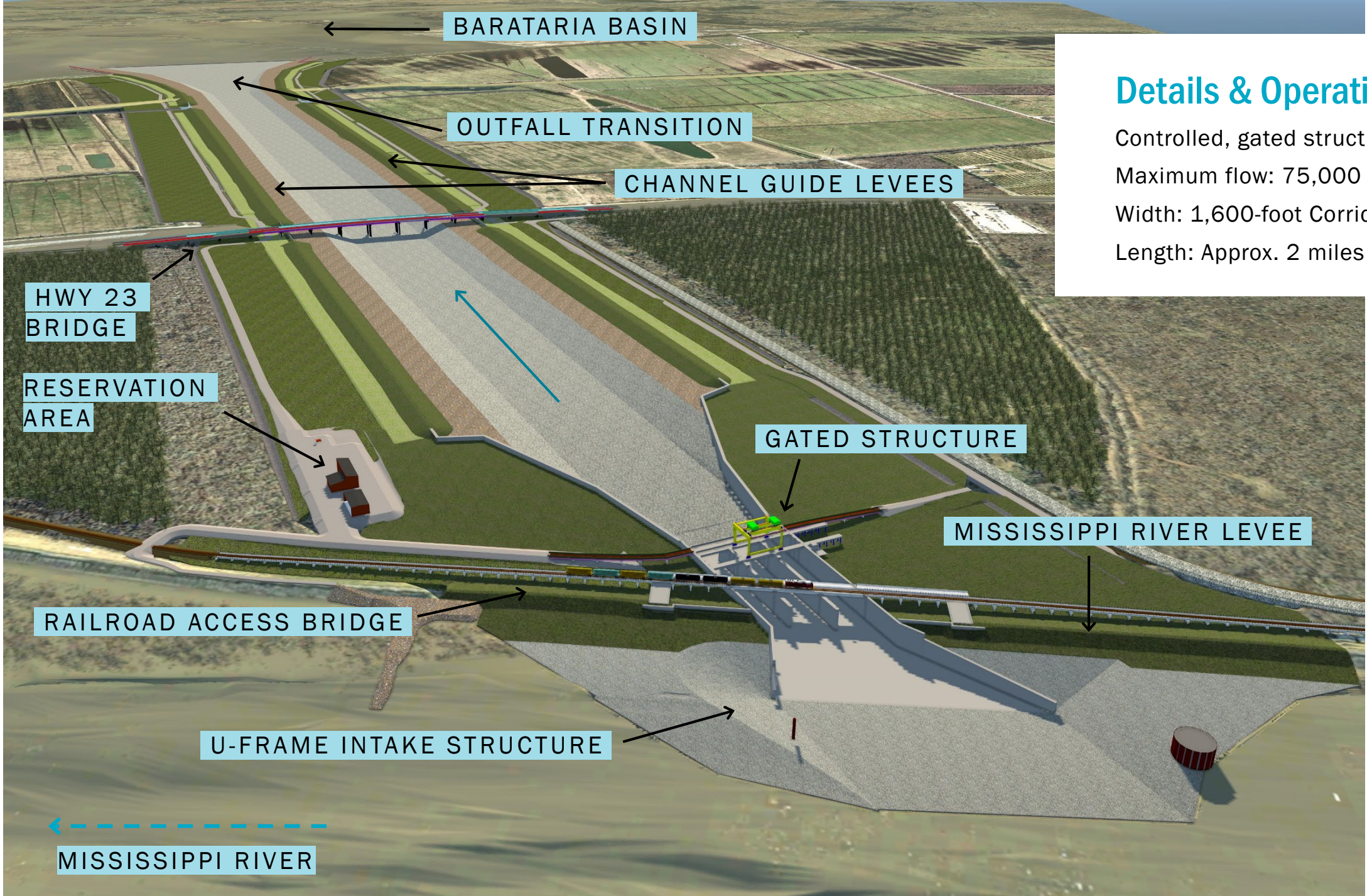
Details & Operations

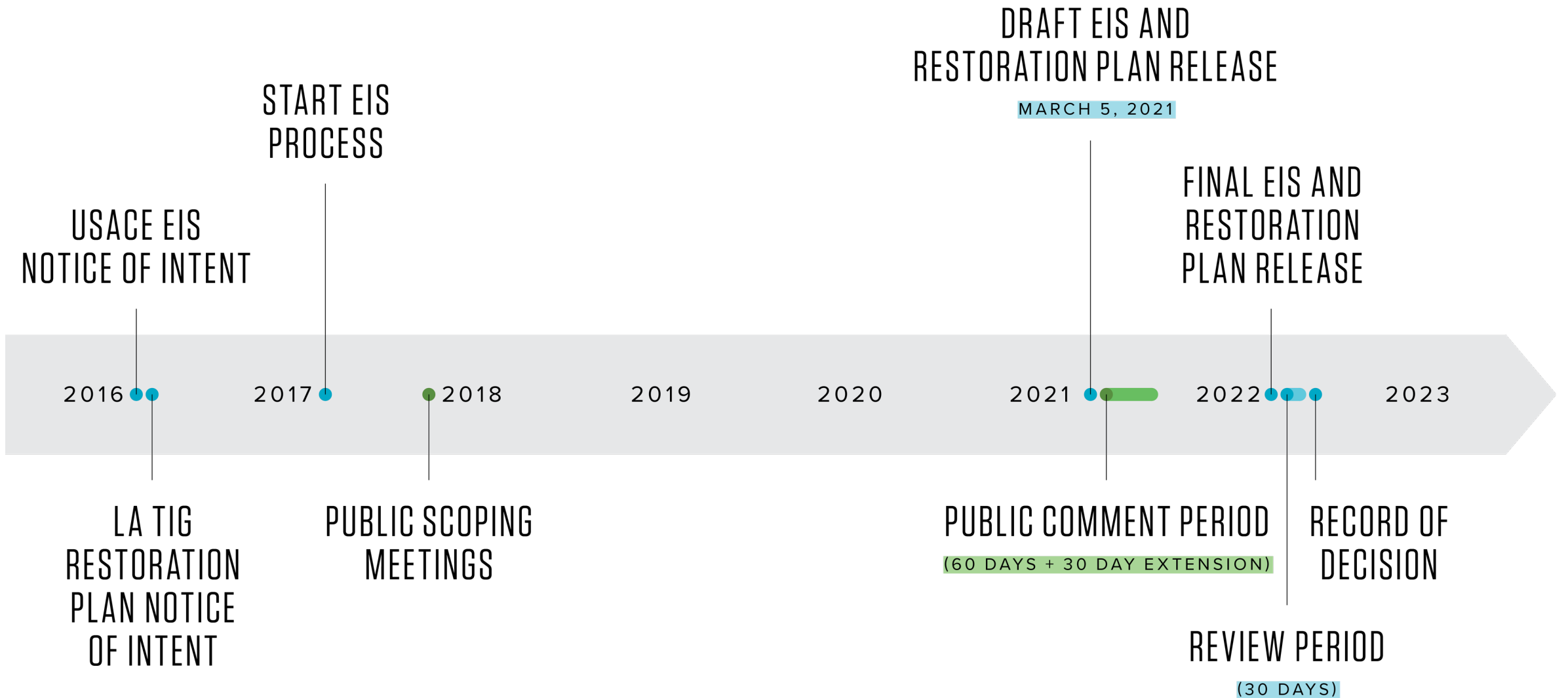
Controlled, gated structure

Maximum flow: 75,000 cfs

Width: 1,600-foot Corridor

Length: Approx. 2 miles





● OPPORTUNITY FOR PUBLIC INPUT

NOVEMBER 9, 2022

Thank You!

RUDY SIMONEAUX, CPRA CHIEF OF ENGINEERING
RUDY.SIMONEAUX@LA.GOV

