



# South Bay Salt Pond Restoration Project

*Restoring the Wild Heart of the South Bay*



April 2008



September 2009



May 2010



October 2010

SALT POND A21 SOUTH BAY SALT POND RESTORATION PROJECT

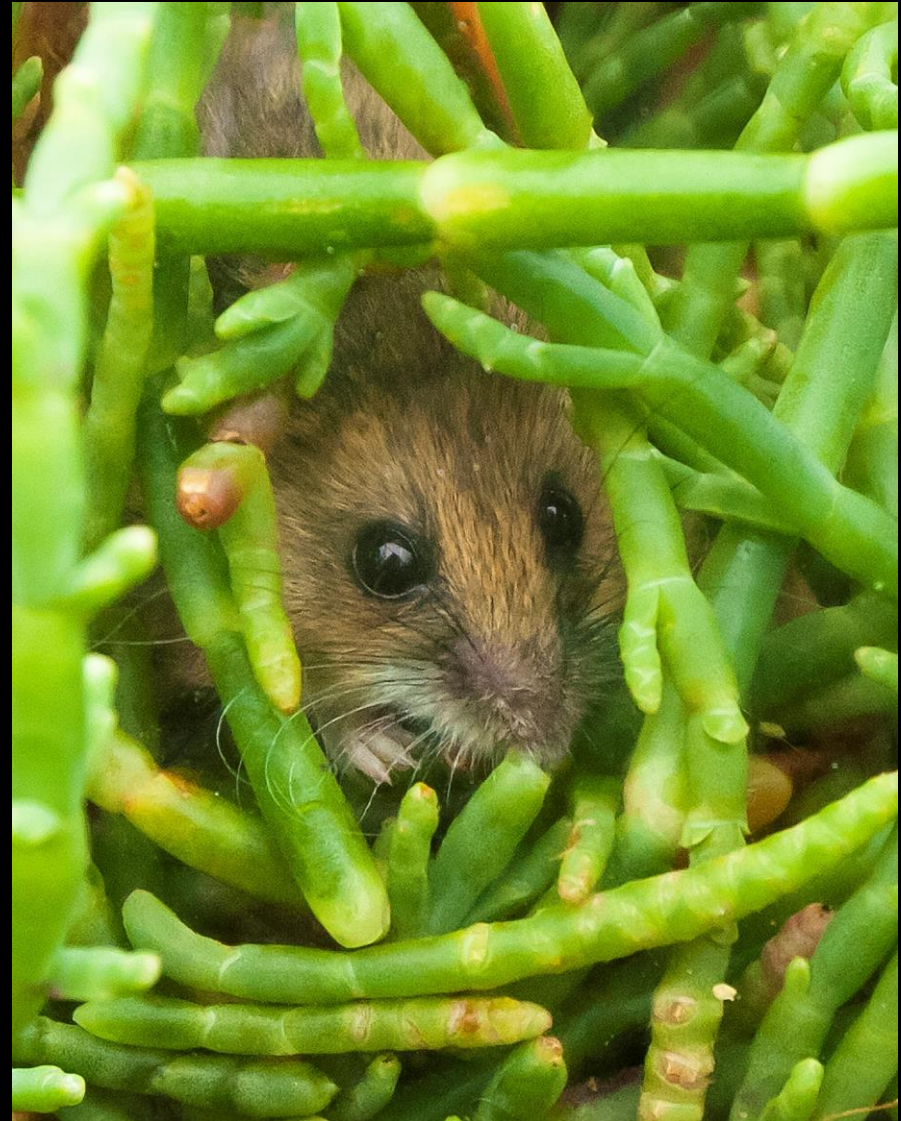
Kite aerial photographs of a small channel in the northeast corner following the 2006 breach to tidal flow. Field of view is ~ 120 feet. . C. Benton

**Dave Halsing, Project Manager**  
**November 19, 2020**

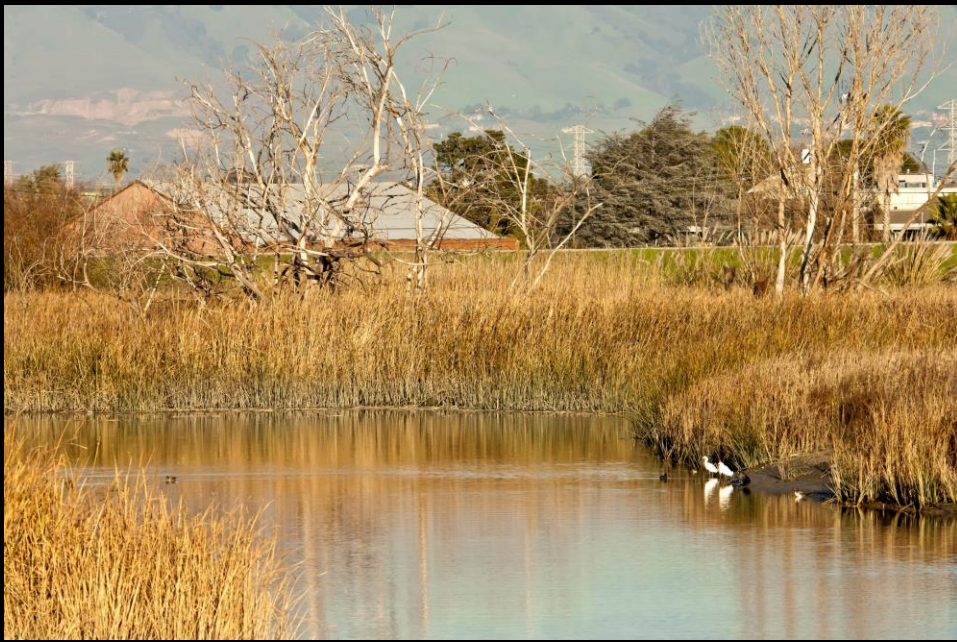




Callie Bowdish



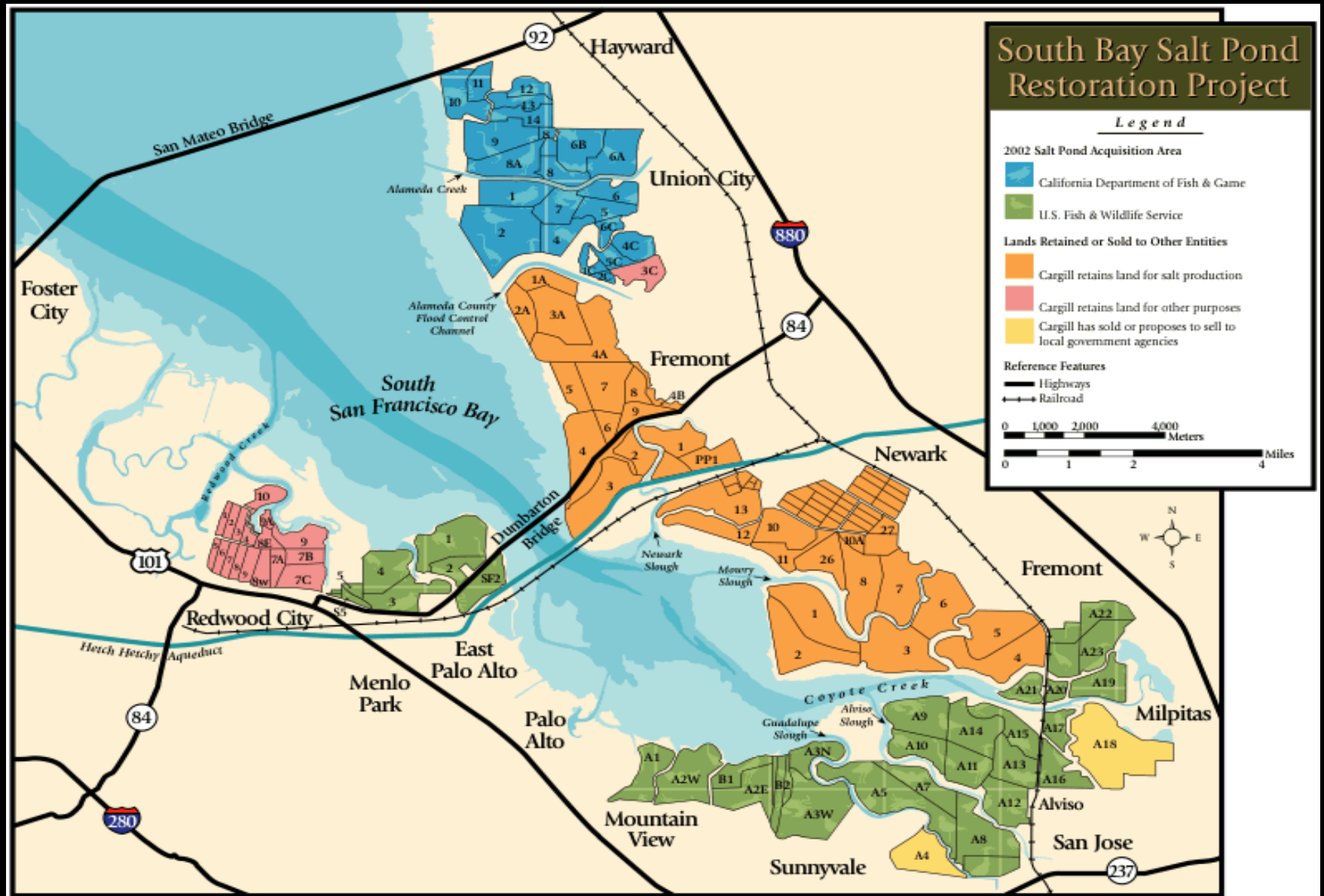






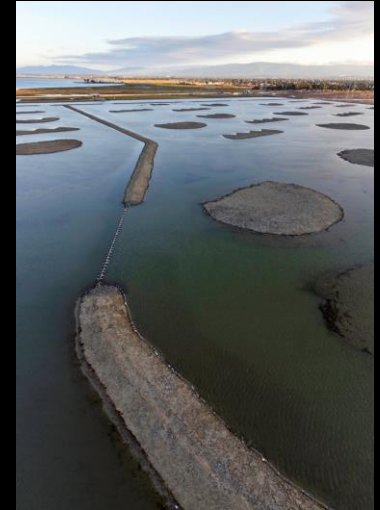


# Project Sites





# Phase 1 Outcomes



**3,000 acres  
of tidal &  
muted tidal  
restoration;  
700 acres  
enhanced  
managed  
ponds**



# Phase 1 Outcomes

**7 miles of new trails**  
**Levee-top & boardwalk**  
**Viewing platforms**  
**Kayak launch**









# Phase 2

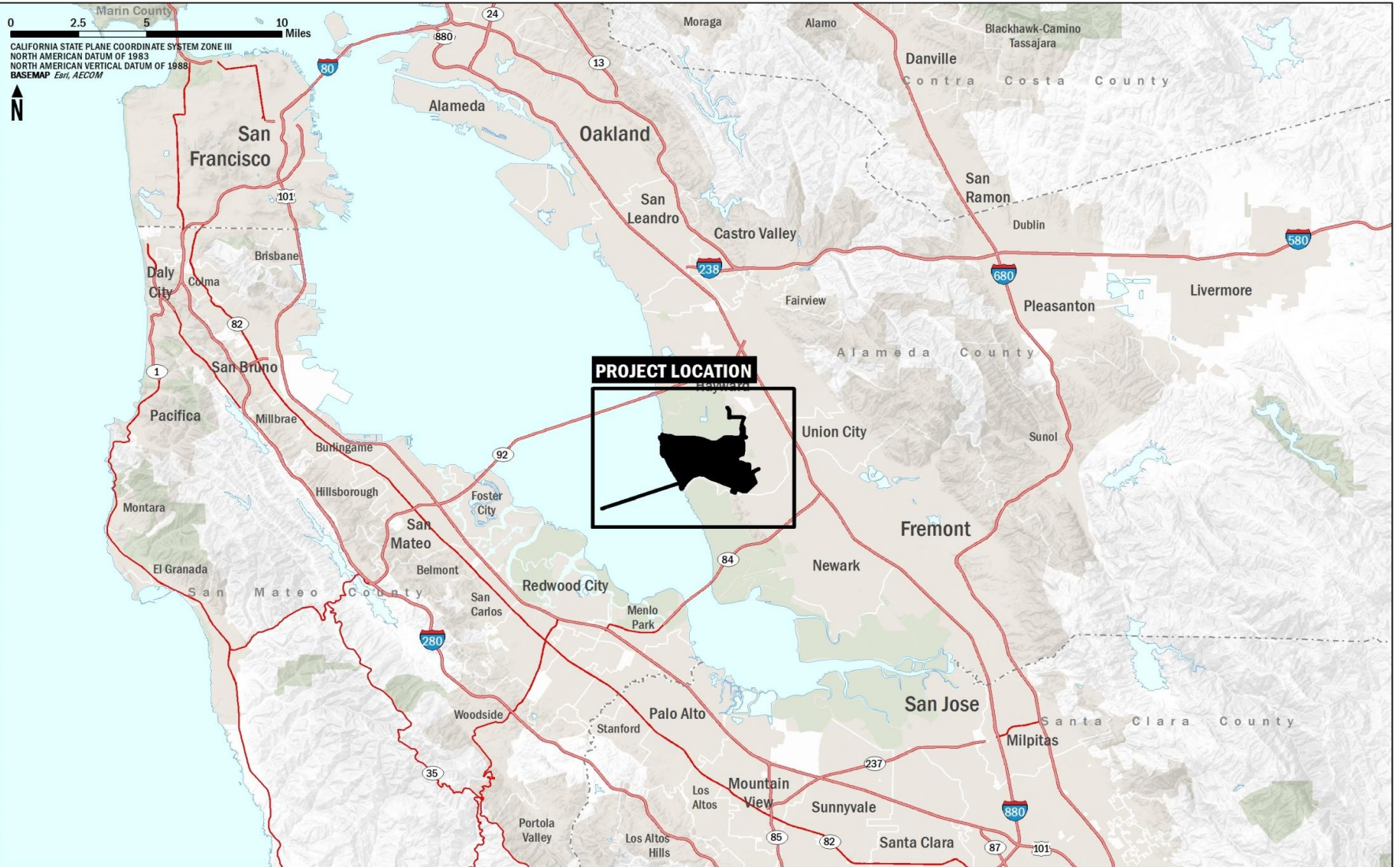








# Phase 2 – Eden Landing



U:\S\_Oakland\CA\_4.4.2017\BSE\Full\Project\PH1\Projects\GIS\Projects\South Bay\_Site\_Fords\_2018\02\_Map\02\_Map\_V02\_Map\_Production\_and\_Reports\Eden Landing\ProjectOverview\Fig\_2-1\_Regional\_Visibility.mxd

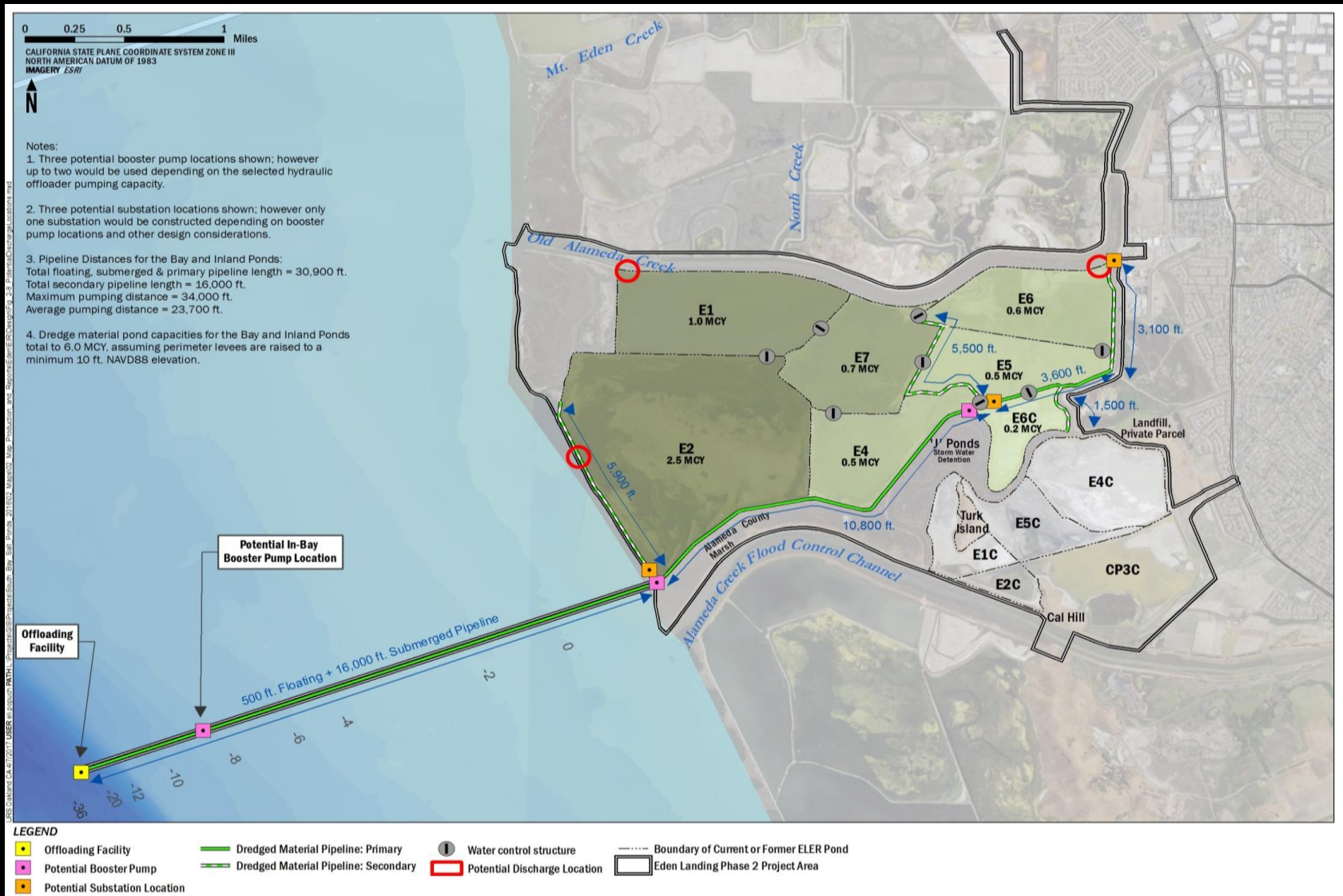


# Phase 2 – Eden Landing





# Phase 2 – Eden Landing





# Reuse of Dredge

- Offloader at mooring piles; intake; pumps
- Raise pond bottoms to MHW (6.5 ft elev; 5 mcy)
- Place dredge material first; breach last
- Deliver slurry for 4-7 years
- Extends construction to **6-10** years, depending on material availability
  - Higher pond bottoms to start (+)
  - Increase certainty of marsh establishment (+)
  - That is time without natural accretion (-)
  - Eden doesn't "need" it; natural accretion is good (-)



# Reuse of Dredge at Eden

- Moffatt & Nichol study cost estimates STARTED at \$165 million
- Our base project cost is \$25-\$30 million
- For minimal reduction in marsh establishment time, it doesn't pencil out for us
- No investor(s) for an offloader yet

*However...*



# Partnerships Add Opportunity

- Joint effort, maybe a Public-Private Partnership
  - Ports, dredgers, marine construction, shipping industry, regulators
  - Public agencies could partly subsidize
- Shared investment up front
- Reduced operating costs, reduced risk, long-term benefits
- Too late for Eden Landing; other loc'ns exist

# Thank You!



**Dave Halsing**

**[dave.halsing@scc.ca.gov](mailto:dave.halsing@scc.ca.gov)**

**650-814-0588**