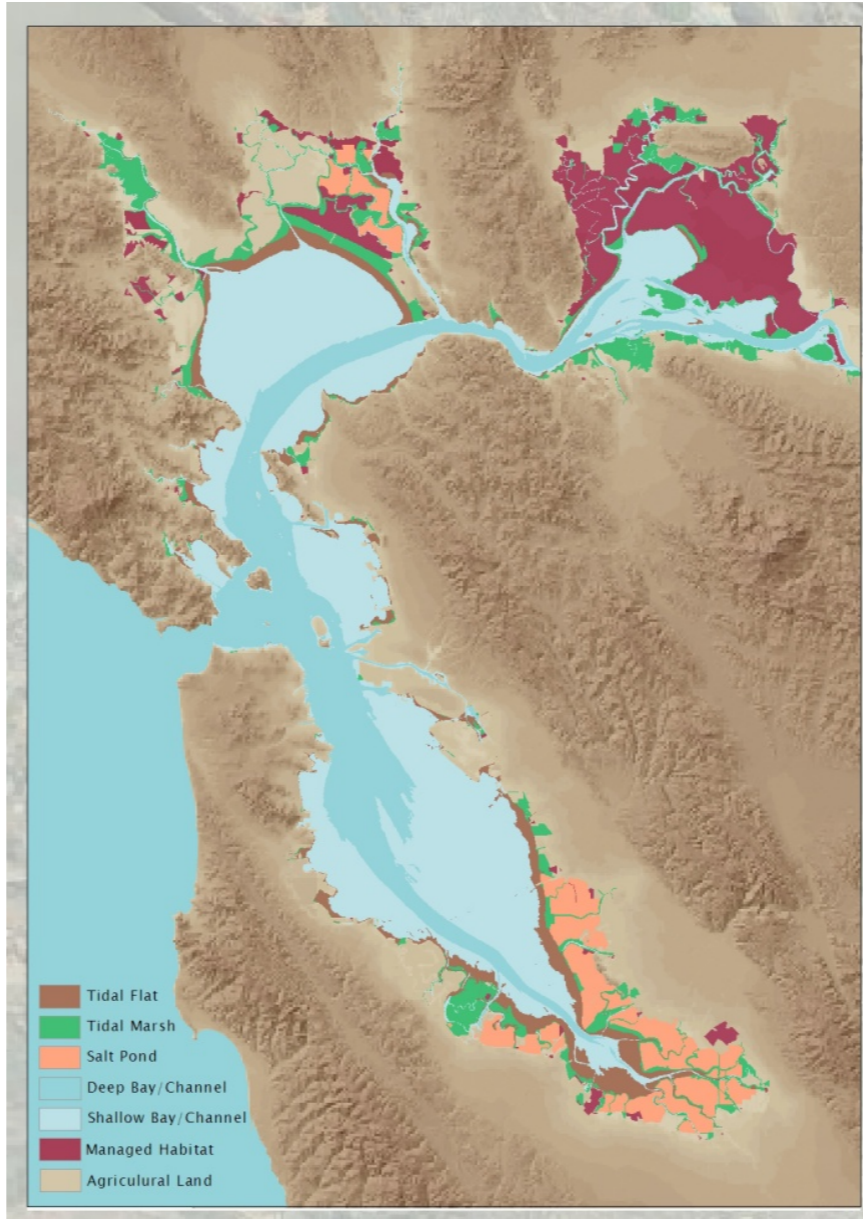
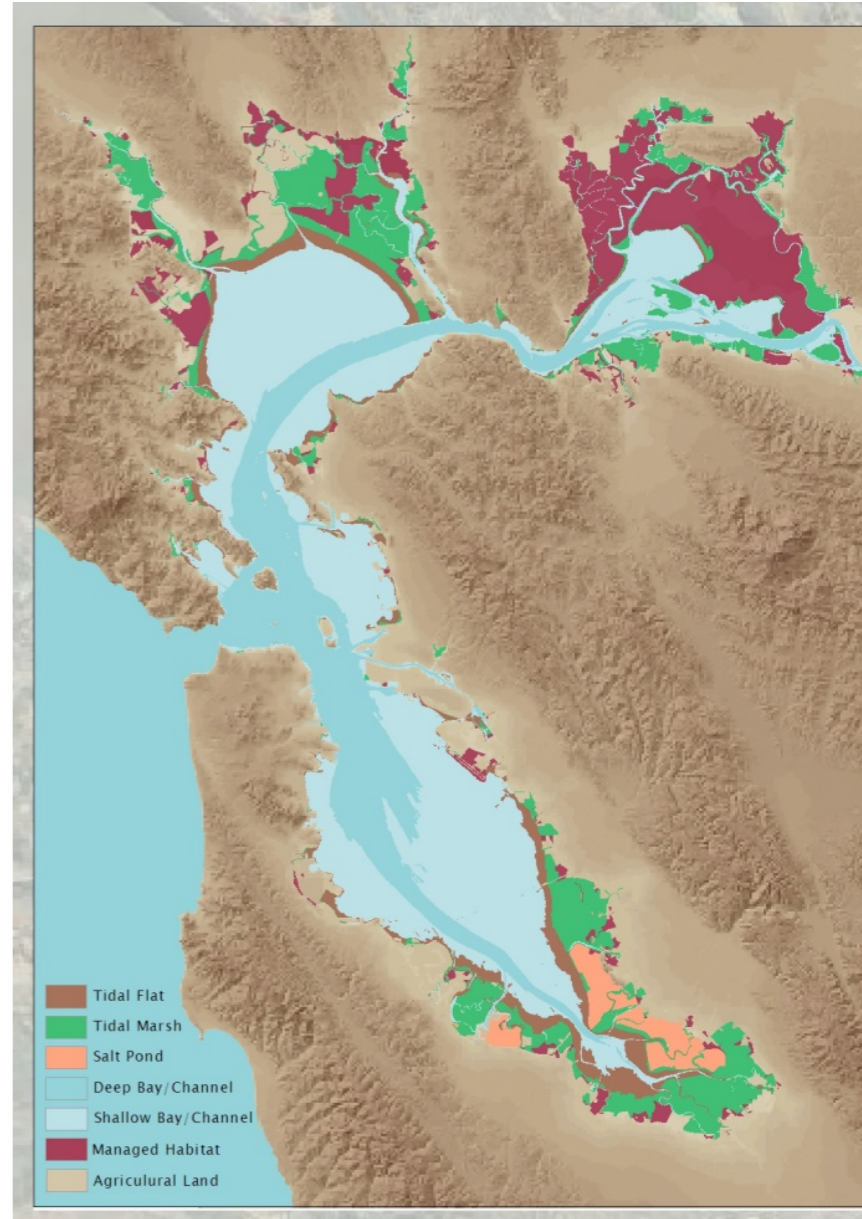




Past (~1850)



Present (~2000)

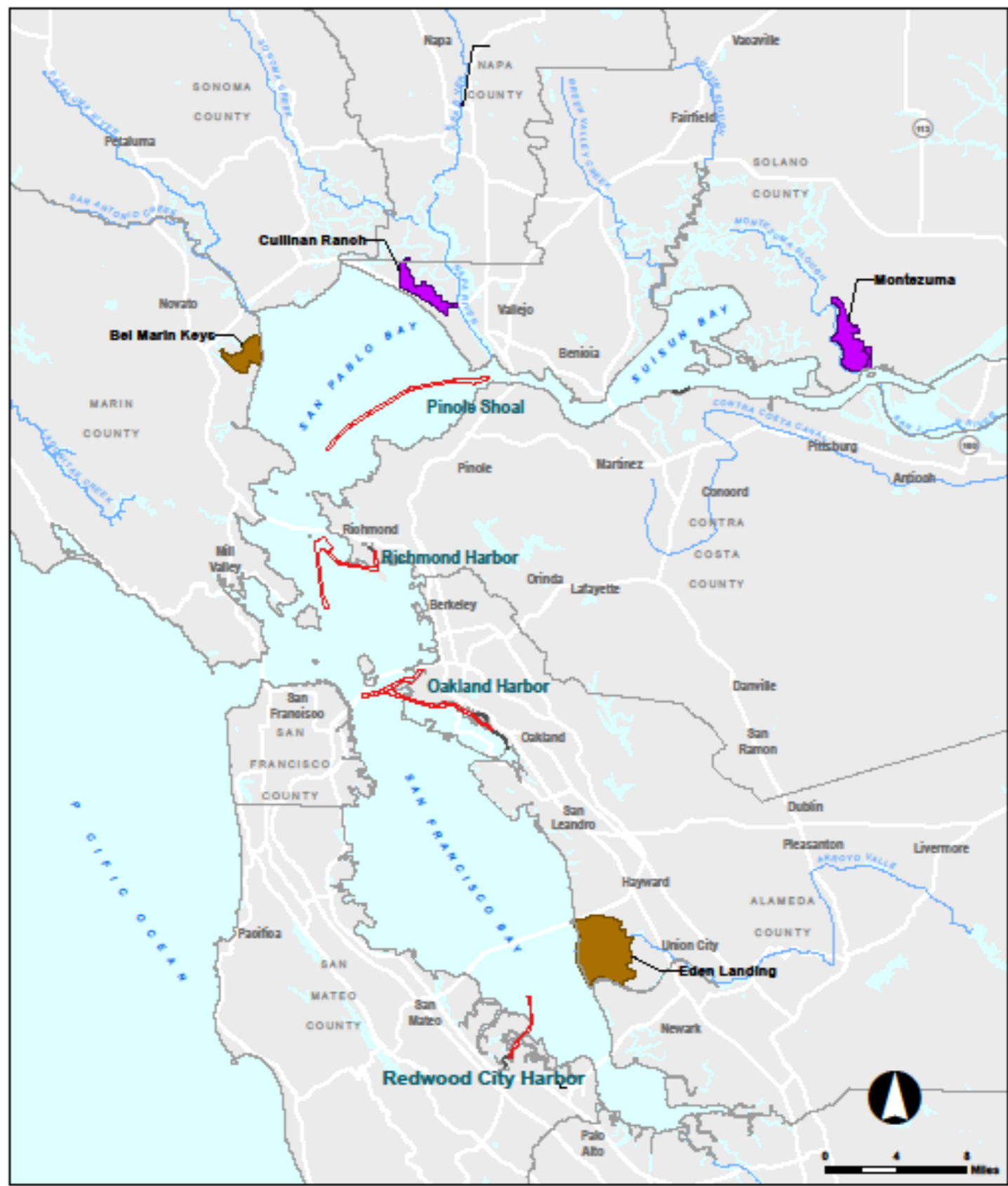


Future (~2030)

SEDIMENT  
ISA

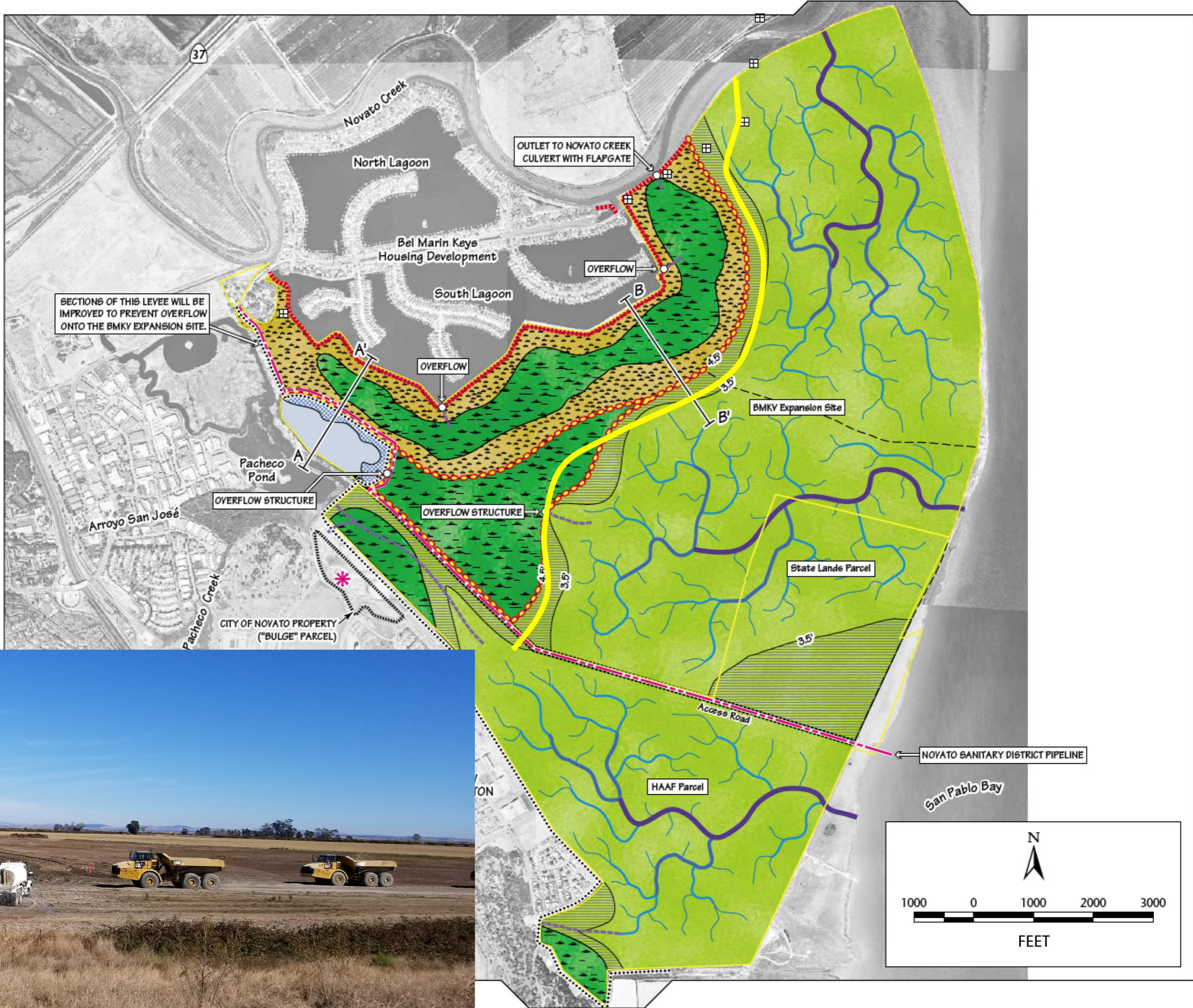
*precious resource*



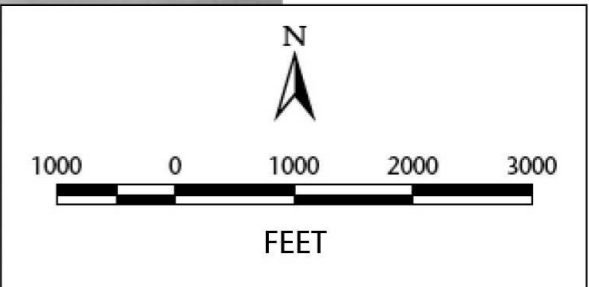


**SAN FRANCISCO BAY WIIN PILOT PROJECT**

- Existing Placement Sites
- Future Placement Sites
- Dredge Sites



SECTIONS OF THIS LEVEE WILL BE IMPROVED TO PREVENT OVERFLOW ONTO THE BMKY EXPANSION SITE.





**2006**



**2014**



RUSSELL  
12/28/08  
MARIN  
INDEPENDENT  
JOURNAL

SOMEDAY,  
ALL OF THIS  
WILL BE  
WETLANDS,  
AGAIN

BEL MARIN  
KEYS  
HABITAT  
RESTORATION