



**Integrating landscape resiliency and
transportation planning in the
San Pablo Baylands of San Francisco Bay**

Jeremy Lowe, San Francisco Estuary Institute

**Strategies For Storms, Flooding
& Sea Level Defense Investments
April 13, 2021**

Photo: Sonoma Land Trust



REGIONAL CONTEXT



Map: SFEI

Map: Caltrans

STATE ROUTE 37



SMART RAIL



Photo: Sonoma Land Trust



Photo: samoasoftball

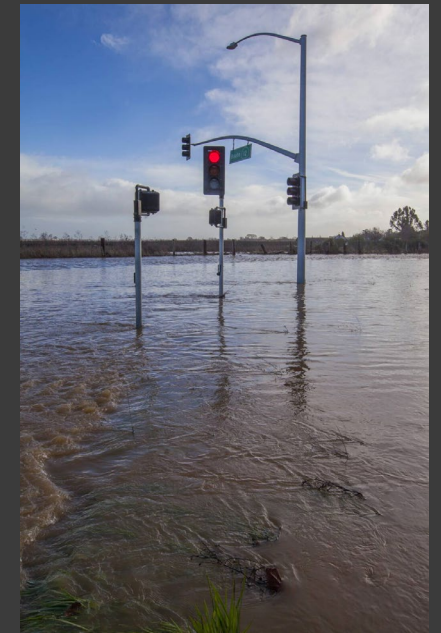
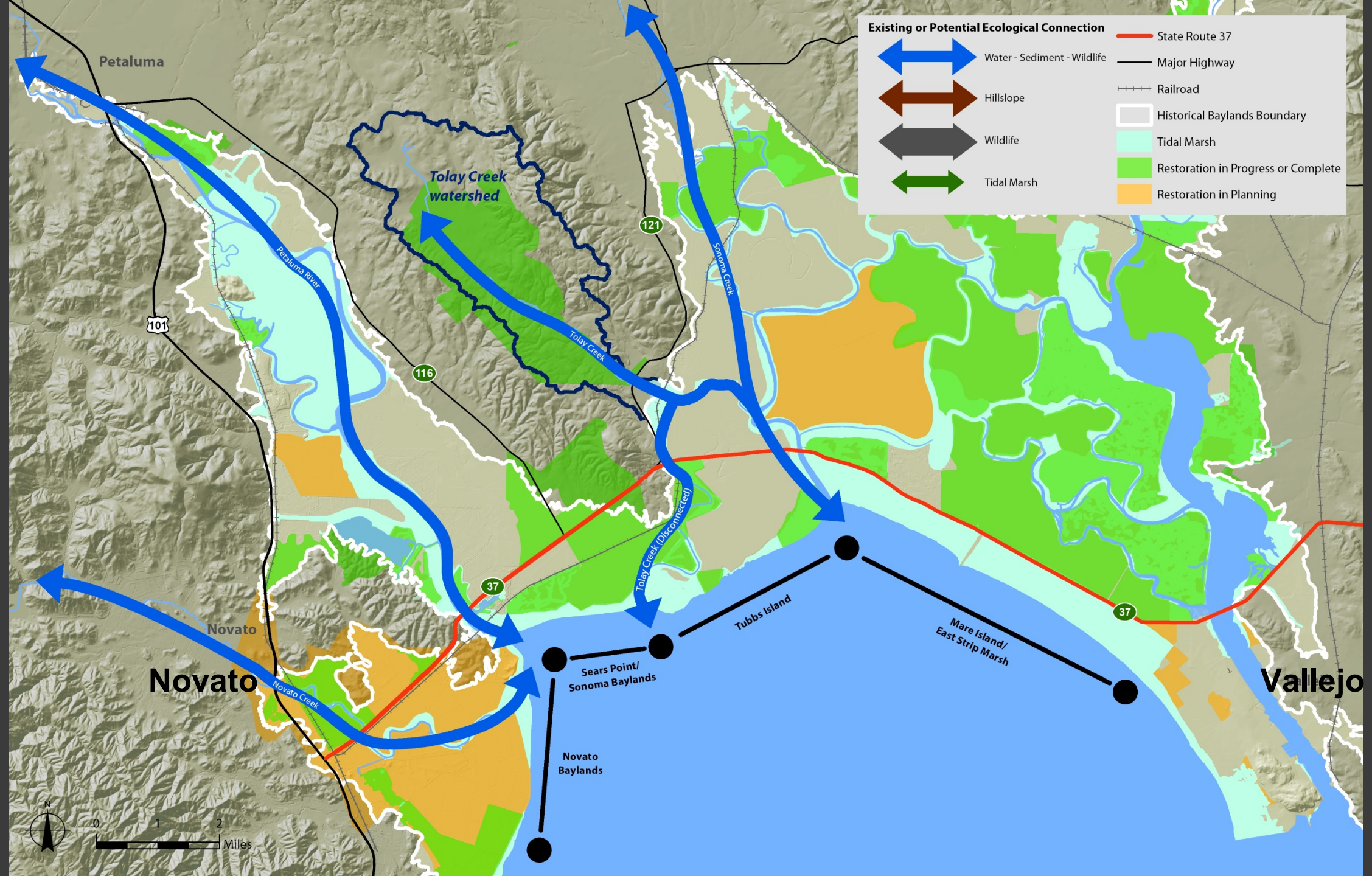


Photo: Robbi Pengelly/Index-Tribune



SONOMA CREEK BRIDGE



“INTEGRATE, NOT MITIGATE”

1. Present bridge crossings and embankments disrupt hydrologic and habitat connectivity.
2. Habitat restoration can help manage extreme flows.
3. Road and rail need to be raised to accommodate sea-level rise and modified to increase connectivity.
4. Bridges need to be lengthened to accommodate future flows.
5. Road and rail co-location and alternative alignments should be considered.



Thank you

Jeremy Lowe
JeremyL@sfei.org
San Francisco Estuary Institute



Photo: ESA