

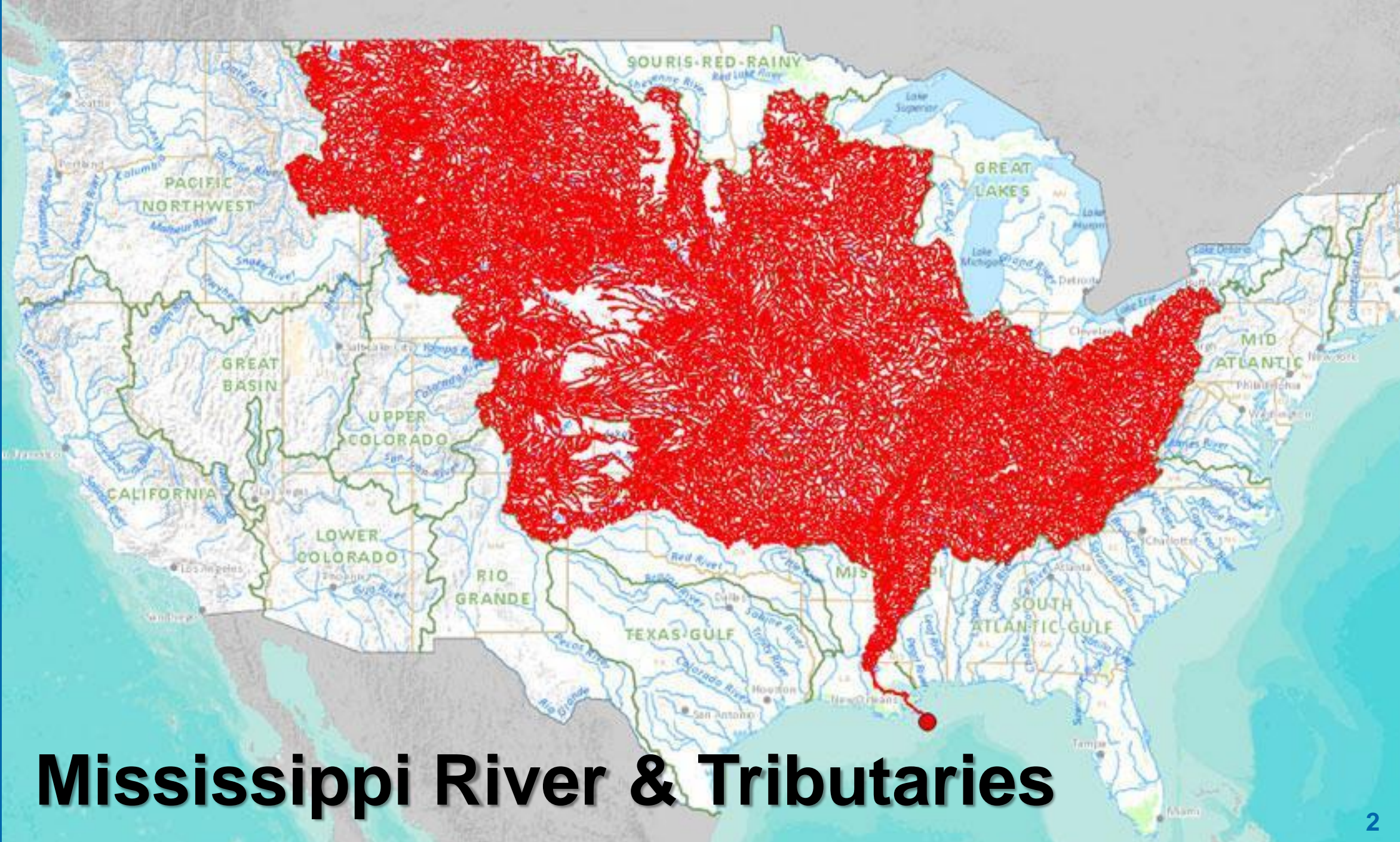
Port NOLA



PORT NOLA
THE PORT OF NEW ORLEANS

SFSLD 2020
Matt Gresham
Port NOLA

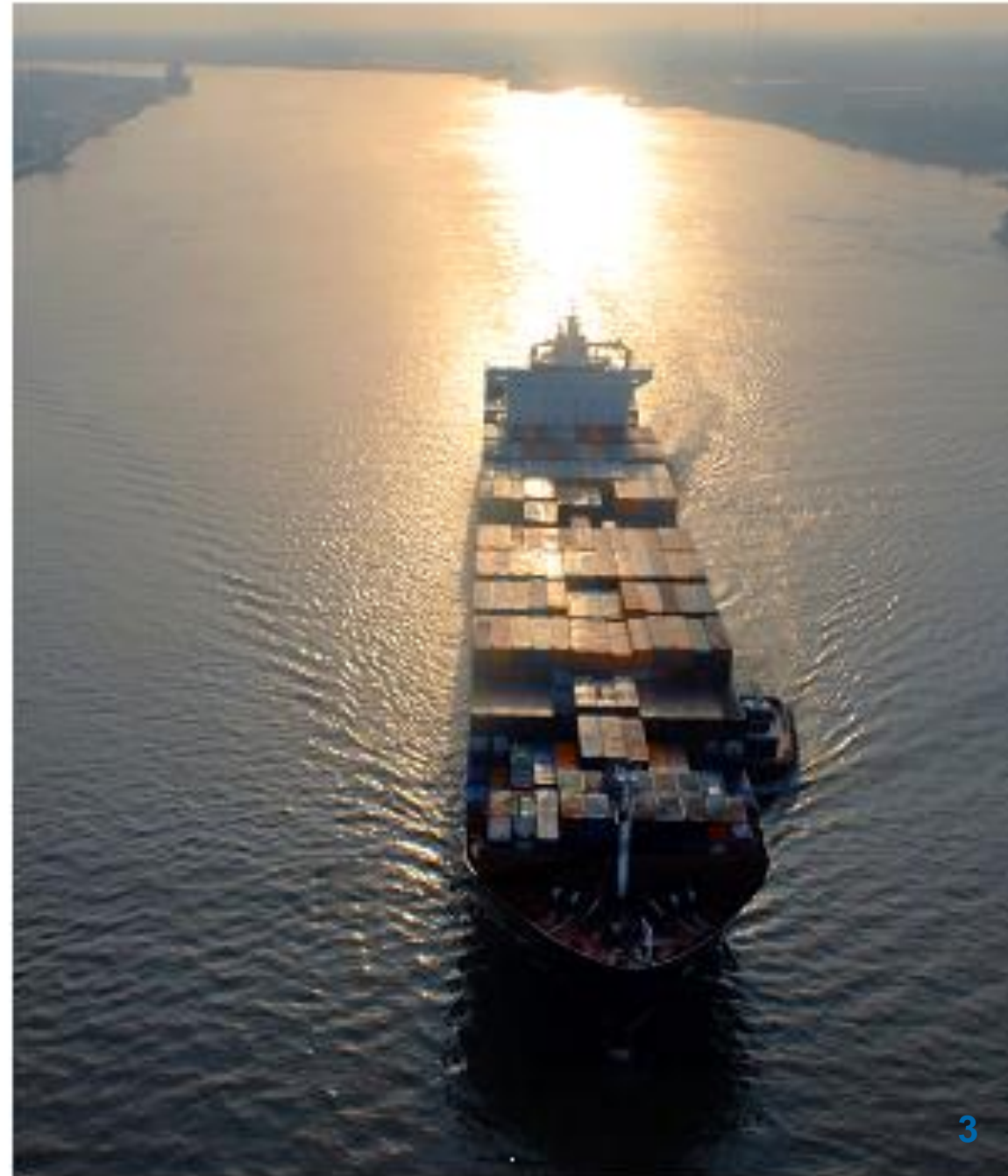
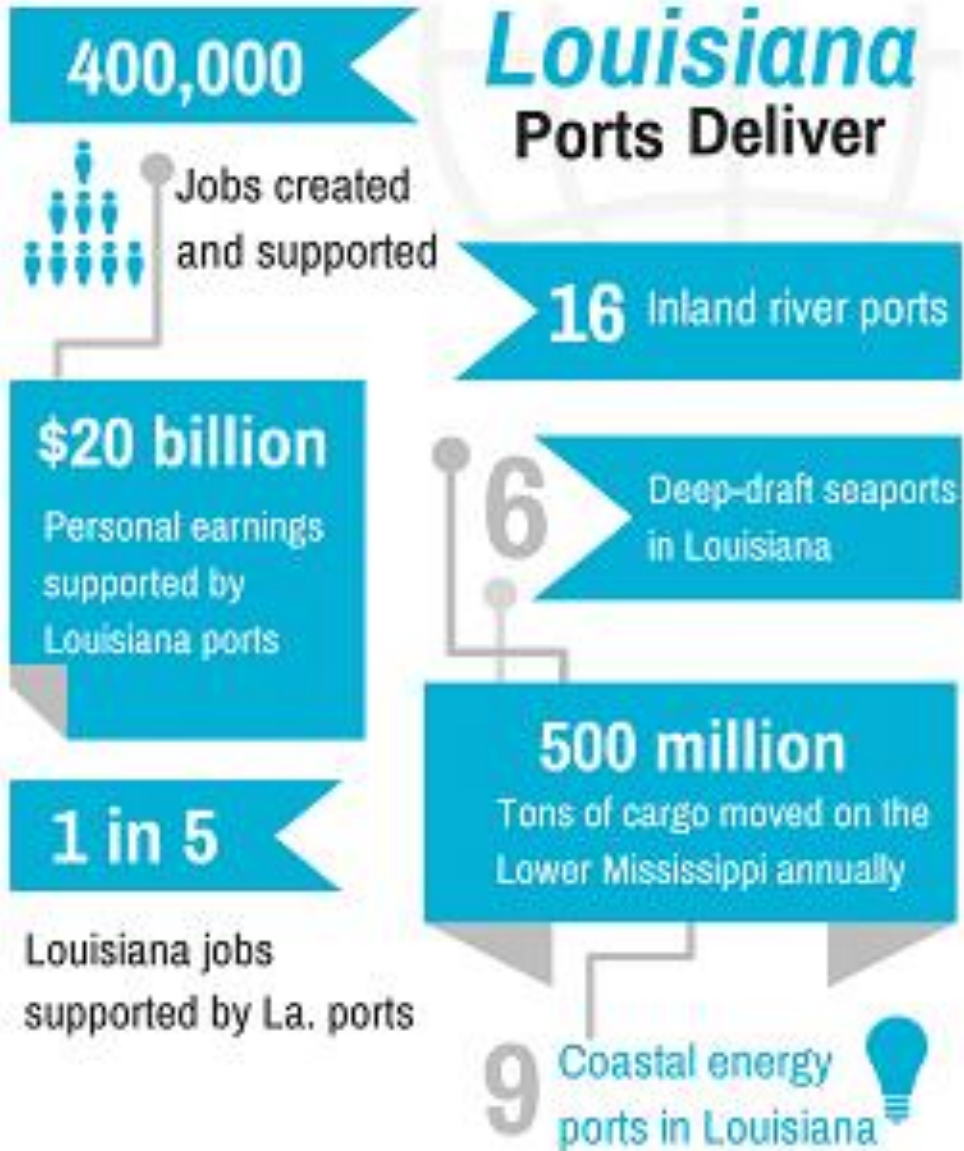




Mississippi River & Tributaries



LOUISIANA PORTS



50-Foot Channel:

- Allow largest vessels to transit the Lower Miss. River
- Spurring investment in second Port NOLA container terminal downriver with 50 foot draft and unlimited air draft
- 1-foot of draft equals \$1 million in cargo on average.
- Eliminate draft restrictions at Southwest Pass



Port Nola Dredging Costs

- Port NOLA maintains berths and approaches
- Operates and owns its own 24-inch Cutterhead Dredge
- Spent \$17.7 million on additional dredge contracts since 2004
- 2018 High River resulted in additional \$3.789 million in dredging costs for approaches.



2020 Busiest Hurricane Season on Record

Gulf Coast experienced eight landfalls:

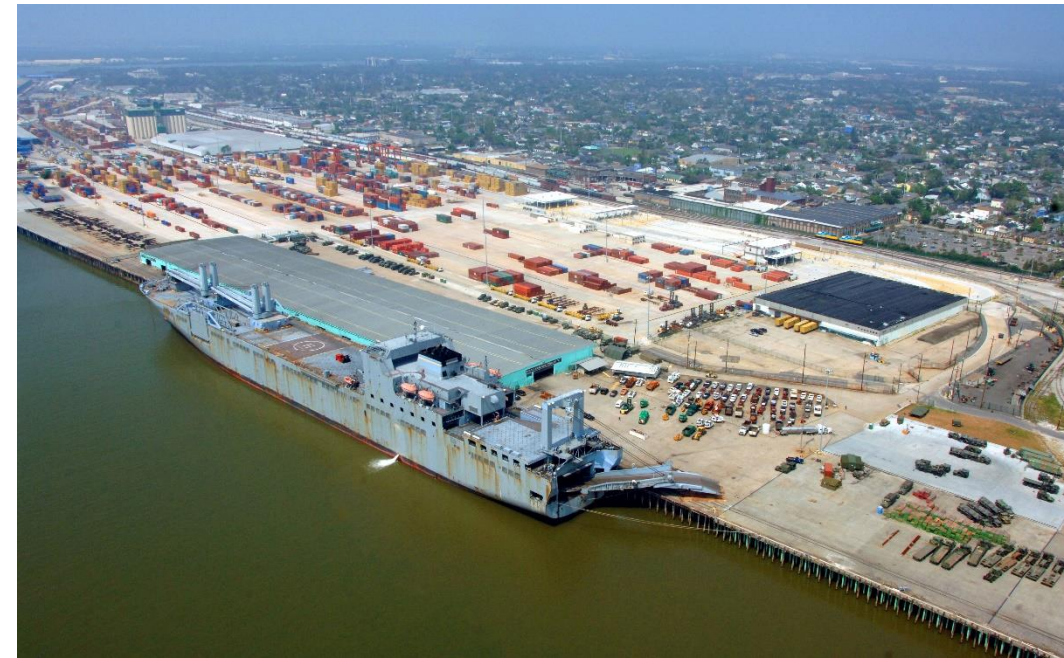
- Five storms closed the LMR for +10 days
- Eight container vessels bypassed Miss. River due to storm closures in 2020
- Each closure results in lost time, increased costs for preparations and recovery surveys and repairs



LMR Post-Storm Navigation Recovery

Most Ports have thorough preparation plans, but recovery plans are more critical for natural disasters:

- Navigation Restoration Team calls begin when storm is first predicted and continue until waterways are fully open and threat has passed.
- MARAD Ready Reserve Fleet ship deployments for manpower restoration and supplies
- Ports serve as critical infrastructure for relief supplies and equipment



Thank you



Facebook
[/NewOrleansPort](#)



LinkedIn
[@PortNola](#)



YouTube
[PortofNola](#)



Twitter
[@PortNola](#)



Instagram
[portnola](#)



[portnola.com](#)